

# Weatherproof outlet boxes

## Single-gang

### Applications:

- For use as a weatherproof junction box or device housing in damp or wet locations when combined with weatherproof cover

### Features:

- Durable die cast aluminum construction for long product life
- Powder paint finish for corrosive environments
- Pre-installed ground screw
- Tapered NPT hubs
- Includes mounting hardware, lugs and closure plugs

### Certifications and compliances:

- UL File No. E-121488
- CSA C22.2 No. 18
- Complies with NEC Article 406.9(B)(1)
- NEMA 3R



### Standard material:

- Die cast aluminum



TP7010 - TP7018



TP7026, TP7034



TP7042, TP7050



TP7058, TP7066

#### SINGLE-GANG - 2" DEEP WITH LUGS

| Cat. #     | Outlet holes          | Cubic inches | Color  | Unit qty. | Wt. lbs. per 100 |
|------------|-----------------------|--------------|--------|-----------|------------------|
| TP7010     | 3 - 1/2"              | 18.3         | Gray   | 50        | 53.5             |
| TP7010BULK | 3 - 1/2"              | 18.3         | Gray   | 50        | 53.5             |
| TP7011     | 3 - 1/2"              | 18.3         | White  | 50        | 53.5             |
| TP7012     | 3 - 1/2"              | 18.3         | Bronze | 50        | 53.5             |
| TP7018     | 3 - 3/4"              | 18.3         | Gray   | 50        | 53.6             |
| TP7019     | 3 - 3/4"              | 18.3         | White  | 50        | 53.6             |
| TP7020     | 3 - 3/4"              | 18.3         | Bronze | 50        | 53.6             |
| TP7026     | 4 - 1/2"              | 17.0         | Gray   | 50        | 55.9             |
| TP7027     | 4 - 1/2"              | 17.0         | White  | 50        | 55.9             |
| TP7028     | 4 - 1/2"              | 17.0         | Bronze | 50        | 55.9             |
| TP7034     | 4 - 3/4"              | 18.3         | Gray   | 50        | 53.9             |
| TP7035     | 4 - 3/4"              | 18.3         | White  | 50        | 53.9             |
| TP7036     | 4 - 3/4"              | 18.3         | Bronze | 50        | 53.9             |
| TP7042     | 5 - 1/2"              | 18.3         | Gray   | 50        | 56.0             |
| TP7050     | 5 - 3/4"              | 17.0         | Gray   | 50        | 55.5             |
| TP7058     | 5 - 1/2" (side entry) | 18.3         | Gray   | 50        | 57.3             |
| TP7066     | 5 - 3/4" (side entry) | 18.0         | Gray   | 50        | 53.9             |



TP7074, TP7078, TP7082

#### SINGLE-GANG - 2-5/8" DEEP WITH LUGS

| Cat. # | Outlet holes | Cubic inches | Color  | Unit qty. | Wt. lbs. per 100 |
|--------|--------------|--------------|--------|-----------|------------------|
| TP7074 | 3 - 1/2"     | 25.5         | Gray   | 25        | 64.3             |
| TP7075 | 3 - 1/2"     | 25.5         | White  | 25        | 64.3             |
| TP7076 | 3 - 1/2"     | 25.5         | Bronze | 25        | 64.3             |
| TP7078 | 3 - 3/4"     | 25.5         | Gray   | 25        | 64.6             |
| TP7082 | 3 - 1"       | 23.0         | Gray   | 25        | 72.8             |

Weatherproof

# Weatherproof outlet boxes

## Two-gang and three-gang

### Applications:

- For use as a weatherproof junction box or device housing in damp or wet locations when combined with weatherproof cover

### Features:

- Durable die cast aluminum construction for long product life
- Powder paint finish for corrosive environments
- Pre-installed ground screw
- Tapered NPT hubs
- Includes mounting hardware, lugs and closure plugs

### Certifications and compliances:

- UL File No. E-121488
- CSA C22.2 No. 18
- Complies with NEC Article 406.9(B)(1)
- NEMA 3R



### Standard material:

- Die cast aluminum



TP7086 - TP7090



TP7093



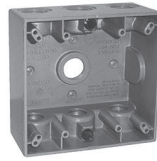
TP7094, TP7098



TP7102, TP7106



TP7118, TP7122



TP7110, TP7114



TP7125



TP7128

#### TWO-GANG - 2" DEEP

| Cat. # | Outlet holes          | Cubic inches | Color  | Unit qty. | Wt. lbs. per 100 |
|--------|-----------------------|--------------|--------|-----------|------------------|
| TP7086 | 3 - 1/2"              | 30.2         | Gray   | 10        | 84.7             |
| TP7087 | 3 - 1/2"              | 30.2         | White  | 10        | 84.7             |
| TP7088 | 3 - 1/2"              | 30.2         | Bronze | 10        | 84.7             |
| TP7090 | 3 - 3/4"              | 30.2         | Gray   | 10        | 83.6             |
| TP7093 | 3 - 1"                | 31.0         | Gray   | 10        | 87.5             |
| TP7094 | 4 - 1/2"              | 30.2         | Gray   | 10        | 82.0             |
| TP7098 | 4 - 3/4"              | 30.2         | Gray   | 10        | 83.9             |
| TP7102 | 5 - 1/2"              | 30.2         | Gray   | 10        | 80.2             |
| TP7103 | 5 - 1/2"              | 30.2         | White  | 10        | 80.2             |
| TP7104 | 5 - 1/2"              | 30.2         | Bronze | 10        | 80.2             |
| TP7118 | 5 - 1/2" (side entry) | 31.0         | Gray   | 10        | 83.1             |
| TP7106 | 5 - 3/4"              | 30.2         | Gray   | 10        | 79.8             |
| TP7122 | 5 - 3/4" (side entry) | 31.0         | Gray   | 10        | 81.4             |
| TP7110 | 7 - 1/2"              | 30.3         | Gray   | 10        | 78.4             |
| TP7125 | 7 - 1/2" (side entry) | 31.0         | Gray   | 10        | 80.2             |
| TP7114 | 7 - 3/4"              | 30.2         | Gray   | 10        | 73.3             |
| TP7128 | 7 - 3/4" (side entry) | 31.0         | Gray   | 10        | 81.4             |



TP7126, TP7130, TP7134



TP7137, TP7138, TP7142



TP7143



TP7144

#### TWO-GANG - 2-3/8" DEEP

| Cat. # | Outlet holes          | Cubic inches | Color | Unit qty. | Wt. lbs. per 100 |
|--------|-----------------------|--------------|-------|-----------|------------------|
| TP7126 | 5 - 1/2"              | 36.0         | Gray  | 6         | 102.6            |
| TP7130 | 5 - 3/4"              | 36.0         | Gray  | 6         | 95.2             |
| TP7134 | 5 - 1"                | 36.0         | Gray  | 6         | 104.2            |
| TP7137 | 7 - 1/2" (side entry) | 36.0         | Gray  | 6         | 95.5             |
| TP7138 | 7 - 3/4" (side entry) | 36.0         | Gray  | 6         | 95.2             |
| TP7142 | 7 - 1" (side entry)   | 36.0         | Gray  | 6         | 107.3            |

#### THREE-GANG - 2-3/8" DEEP

| Cat. # | Outlet holes | Cubic inches | Color | Unit qty. | Wt. lbs. per 100 |
|--------|--------------|--------------|-------|-----------|------------------|
| TP7143 | 7 - 3/4"     | 55.0         | Gray  | 5         | 139.2            |
| TP7144 | 7 - 1"       | 55.0         | Gray  | 5         | 131.9            |

# Weatherproof outlet boxes

## Round boxes

### Applications:

- For use as a weatherproof junction box, device housing or as a lampholder mounting in damp or wet locations

### Features:

- Durable die cast aluminum construction for long product life
- Powder paint finish for corrosive environments
- Pre-installed ground screw
- Tapered NPT hubs
- Boxes include mounting hardware and closure plugs
- Covers include gasket and mounting hardware

### Certifications and compliances:

- UL File No. E-121488
- CSA C22.2 No. 18
- cULus
- Complies with NEC Article 406.9(B)(1)
- NEMA 3R



### Standard materials:

- Boxes – die cast aluminum
- Gaskets – polyethylene foam



#### 4" ROUND - 1-1/2" DEEP <sup>A</sup>

| Cat. # | Outlet holes | Cubic inches | Color  | Unit qty. | Wt. lbs. per 100 |
|--------|--------------|--------------|--------|-----------|------------------|
| TP7146 | 5 - 1/2"     | 16.0         | Gray   | 25        | 43.8             |
| TP7148 | 5 - 1/2"     | 16.0         | White  | 25        | 43.8             |
| TP7149 | 5 - 1/2"     | 16.0         | Bronze | 25        | 43.8             |
| TP7150 | 5 - 3/4"     | 16.0         | Gray   | 25        | 44.8             |
| TP7154 | 5 - 3/4"     | 16.0         | White  | 25        | 44.8             |
| TP7153 | 5 - 3/4"     | 16.0         | Bronze | 25        | 44.8             |

#### WITH BLANK PLATE <sup>B</sup>

| Cat. # | Outlet holes | Cubic inches | Color | Unit qty. | Wt. lbs. per 100 |
|--------|--------------|--------------|-------|-----------|------------------|
| TP7147 | 5 - 1/2"     | 16.0         | Gray  | 24        | 67.4             |
| TP7151 | 5 - 3/4"     | 16.0         | Gray  | 24        | 68.4             |

#### 4" ROUND BLANK PLATE COVERS <sup>B</sup>

| Cat. # | Outlet holes | Cubic inches | Color  | Unit qty. | Wt. lbs. per 100 |
|--------|--------------|--------------|--------|-----------|------------------|
| TP7158 | –            | –            | Gray   | 50        | 24.0             |
| TP7159 | –            | –            | White  | 50        | 24.0             |
| TP7160 | –            | –            | Bronze | 50        | 24.0             |

<sup>A</sup> UL Listed and CSA certified.

<sup>B</sup> cULus Listed.

# Weatherproof outlet boxes

## Extensions and adapters

### Applications:

- To provide weatherproof outlet boxes with additional capacity for larger wire fill requirements

### Features:

- Durable die cast aluminum construction for long product life
- Powder paint finish for corrosive environments
- Tapered NPT hubs
- Includes gasket, mounting hardware and closure plugs

### Certifications and compliances:

- UL File No. E-121488
- CSA C22.2 No. 18
- cULus
- Complies with NEC Article 406.9(B)(1)
- NEMA 3R



TP7120



TP7123



TP7152



TP7171



TP7172



TP7173



TP7177



TP7183



TP7258

#### SINGLE-GANG EXTENSION – 1" DEEP <sup>A</sup>

| Cat. # | Outlet holes | Cubic inch capacity | Color | Unit qty. | Wt. lbs. per 100 |
|--------|--------------|---------------------|-------|-----------|------------------|
| TP7120 | –            | 9.5                 | Gray  | 25        | 20.7             |

#### SINGLE-GANG EXTENSION ADAPTERS – 1-1/2" DEEP <sup>A</sup>

| Cat. # | Outlet holes | Cubic inch capacity | Color  | Unit qty. | Wt. lbs. per 100 |
|--------|--------------|---------------------|--------|-----------|------------------|
| TP7171 | 2 - 1/2"     | 9.5                 | Gray   | 6         | 40.9             |
| TP7172 | 2 - 3/4"     | 11.0                | Gray   | 6         | 36.0             |
| TP7173 | 4 - 1/2"     | 9.5                 | Gray   | 25        | 40.1             |
| TP7175 | 4 - 1/2"     | 9.5                 | Bronze | 25        | 40.1             |
| TP7176 | 4 - 1/2"     | 9.5                 | White  | 25        | 40.1             |
| TP7174 | 4 - 3/4"     | 11.0                | Gray   | 25        | 31.3             |
| TP7177 | 6 - 1/2"     | 9.5                 | Gray   | 6         | 41.4             |
| TP7183 | 6 - 3/4"     | 11.0                | Gray   | 6         | 34.7             |

#### SINGLE-GANG FLANGED EXTENSION ADAPTERS – 1-1/2" DEEP <sup>B</sup>

| Cat. # | Outlet holes | Cubic inch capacity | Color | Unit qty. | Wt. lbs. per 100 |
|--------|--------------|---------------------|-------|-----------|------------------|
| TP7258 | 4 - 1/2"     | 12.5                | Gray  | 6         | 47.2             |

#### TWO-GANG EXTENSION – 1" DEEP <sup>C</sup>

| Cat. # | Outlet holes | Cubic inch capacity | Color | Unit qty. | Wt. lbs. per 100 |
|--------|--------------|---------------------|-------|-----------|------------------|
| TP7123 | –            | 16.0                | Gray  | 10        | 26.7             |

#### 4" ROUND BOX ADAPTER – 1-1/2" DEEP

| Cat. #              | Outlet holes | Cubic inches | Color  | Unit qty. | Wt. lbs. per 100 |
|---------------------|--------------|--------------|--------|-----------|------------------|
| TP7152 <sup>C</sup> | 4 - 1/2"     | 16.5         | Gray   | 25        | 41.6             |
| TP7157 <sup>B</sup> | 4 - 1/2"     | 16.5         | White  | 25        | 38.0             |
| TP7155 <sup>B</sup> | 4 - 1/2"     | 16.5         | Bronze | 25        | 38.0             |

<sup>A</sup> UL Listed and CSA certified.

<sup>B</sup> cULus Listed.

<sup>C</sup> UL Listed.

# Weatherproof outlet covers

## Single-gang

### Applications:

- Used to provide weatherproof protection for outdoor receptacles

### Features:

- Durable die cast aluminum construction for long product life
- Self-closing cover provides weatherproof protection when device not in use
- Powder paint finish for corrosive environments
- Includes gasket and hardware

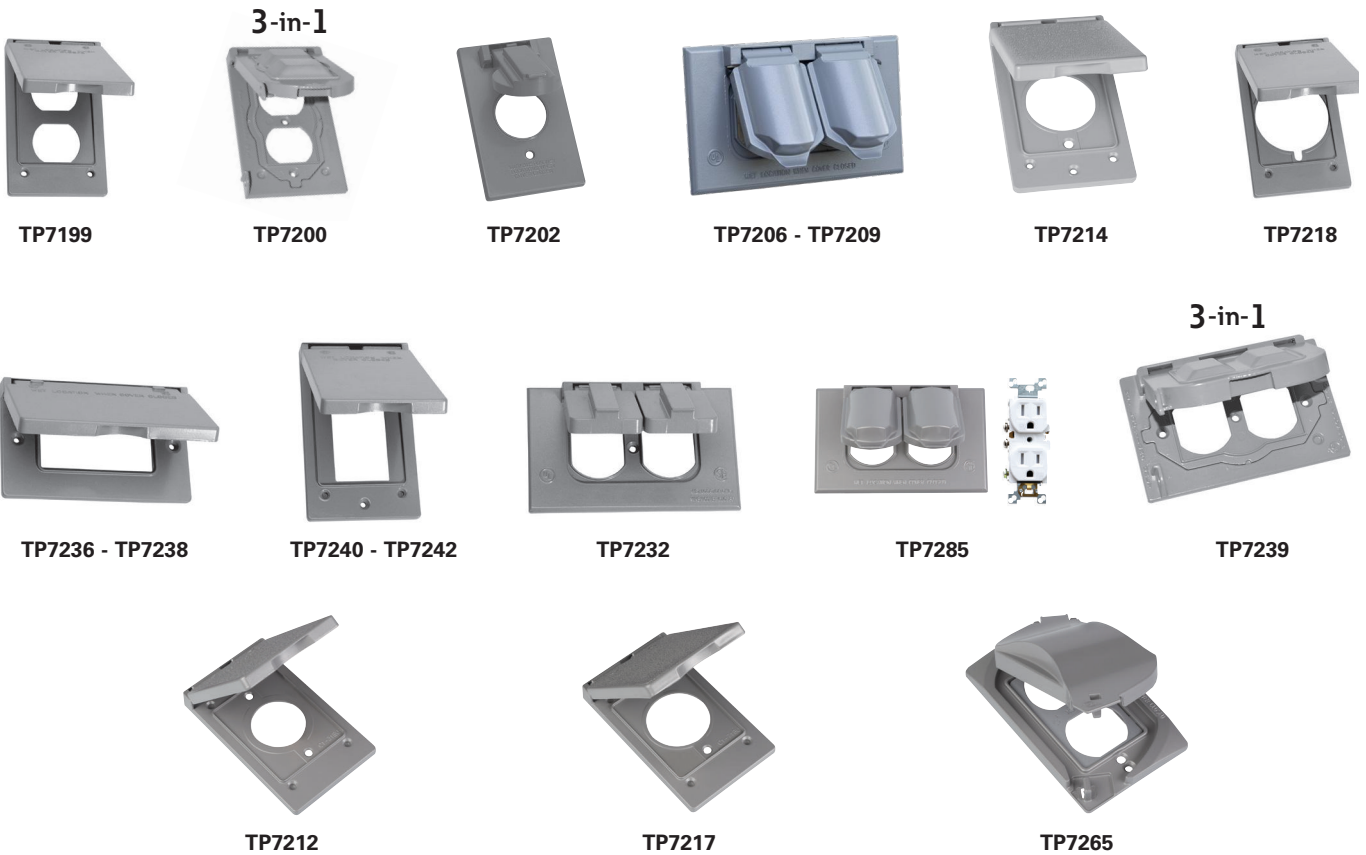
### Certifications and compliances:

- UL File No. E-121488
- CSA C22.2 No. 18
- Complies with NEC Article 406.9(B)(1)
- NEMA 3R



### Standard materials:

- Covers – die cast aluminum
- Gaskets – polyethylene foam



Weatherproof

# Weatherproof outlet covers

## Single-gang

| Cat. #              | Description                               | Color   | Mounting orientation | Unit qty. | Wt. lbs. per 100 |
|---------------------|---|---------|----------------------|-----------|------------------|
| TP7199 <sup>A</sup> | Duplex                                    | Gray    | Vertical             | 50        | 29.3             |
| TP7198 <sup>A</sup> | Duplex                                    | White   | Vertical             | 50        | 29.3             |
| TP7197 <sup>A</sup> | Duplex                                    | Bronze  | Vertical             | 50        | 29.3             |
| TP7200 <sup>B</sup> | GFCI, duplex, 1.38" round                 | Gray    | Vertical             | 24        | 43.9             |
| TP7201 <sup>B</sup> | GFCI, duplex, 1.38" round                 | White   | Vertical             | 24        | 43.9             |
| TP7205 <sup>B</sup> | GFCI, duplex, 1.38" round                 | Bronze  | Vertical             | 24        | 43.9             |
| TP7202 <sup>A</sup> | Single receptacle or switch, 1.425" round | Gray    | Vertical             | 25        | 16.9             |
| TP7203 <sup>A</sup> | Single receptacle or switch, 1.425" round | White   | Vertical             | 25        | 16.9             |
| TP7204 <sup>A</sup> | Single receptacle or switch, 1.425" round | Bronze  | Vertical             | 25        | 16.9             |
| TP7206 <sup>A</sup> | Duplex or combo switch                    | Natural | Horizontal           | 50        | 18.6             |
| TP7207 <sup>A</sup> | Duplex or combo switch                    | Gray    | Horizontal           | 50        | 19.2             |
| TP7208 <sup>A</sup> | Duplex or combo switch                    | White   | Horizontal           | 50        | 19.2             |
| TP7209 <sup>A</sup> | Duplex or combo switch                    | Bronze  | Horizontal           | 50        | 19.2             |
| TP7214 <sup>A</sup> | Single receptacle or switch, 1.625" round | Gray    | Vertical             | 25        | 30.4             |
| TP7218 <sup>A</sup> | 20/30/50A receptacle, 2.125" round        | Gray    | Vertical             | 25        | 28.6             |
| TP7221 <sup>A</sup> | 20/30/50A receptacle, 2.125" round        | White   | Vertical             | 25        | 28.6             |
| TP7219 <sup>A</sup> | 20/30/50A receptacle, 2.125" round        | Bronze  | Vertical             | 25        | 28.6             |
| TP7232 <sup>A</sup> | Duplex, switch, combination device        | Natural | Horizontal           | 50        | 17.9             |
| TP7233 <sup>A</sup> | Duplex, switch, combination device        | Gray    | Horizontal           | 50        | 18.5             |
| TP7236 <sup>A</sup> | GFCI                                      | Gray    | Horizontal           | 25        | 21.8             |
| TP7237 <sup>A</sup> | GFCI                                      | White   | Horizontal           | 25        | 21.8             |
| TP7238 <sup>A</sup> | GFCI                                      | Bronze  | Horizontal           | 25        | 21.8             |
| TP7239 <sup>B</sup> | GFCI, duplex, 1.38" round                 | Gray    | Horizontal           | 24        | 43.7             |
| TP7245 <sup>B</sup> | GFCI, duplex, 1.38" round                 | White   | Horizontal           | 24        | 43.7             |
| TP7246 <sup>B</sup> | GFCI, duplex, 1.38" round                 | Bronze  | Horizontal           | 24        | 43.7             |
| TP7240 <sup>A</sup> | GFCI                                      | Gray    | Vertical             | 25        | 22.5             |
| TP7241 <sup>A</sup> | GFCI                                      | White   | Vertical             | 25        | 22.5             |
| TP7242 <sup>A</sup> | GFCI                                      | Bronze  | Vertical             | 25        | 22.5             |
| TP7212 <sup>A</sup> | Single receptacle or switch, 1.425" round | Gray    | Vertical             | 15        | 29.9             |
| TP7217 <sup>A</sup> | Single receptacle or switch, 1.64" round  | Gray    | Vertical             | 15        | 30.0             |
| TP7285 <sup>B</sup> | Duplex cover with receptacle              | Gray    | Horizontal           | 10        | 31.9             |
| TP7286 <sup>B</sup> | Duplex cover with receptacle              | White   | Horizontal           | 10        | 31.9             |
| TP7287 <sup>B</sup> | Duplex cover with receptacle              | Bronze  | Horizontal           | 10        | 31.9             |
| TP7265 <sup>B</sup> | GFCI, duplex, 1.38" round                 | Gray    | Vertical/horizontal  | 12        | 27.3             |
| TP7267 <sup>B</sup> | GFCI, duplex, 1.38" round                 | White   | Vertical/horizontal  | 12        | 27.3             |
| TP7266 <sup>B</sup> | GFCI, duplex, 1.38" round                 | Bronze  | Vertical/horizontal  | 12        | 27.3             |

<sup>A</sup> UL Listed and CSA certified.

<sup>B</sup> cULus Listed.

# Weatherproof outlet covers

## Two-gang

### Applications:

- Used to provide weatherproof protection for outdoor receptacles

### Features:

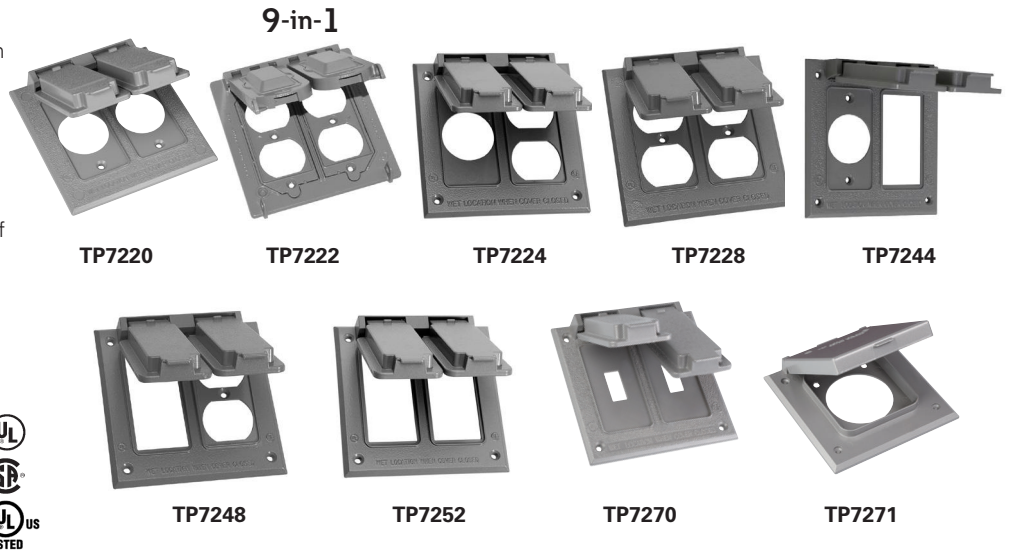
- Durable die cast aluminum construction for long product life
- Self-closing cover provides weatherproof protection when device not in use
- Powder paint finish for corrosive environments
- Includes gasket and hardware

### Certifications and compliances:

- UL File No. E-121488
- CSA C22.2 No. 18
- cULus
- Complies with NEC Article 406.9(B)(1)
- NEMA 3R

### Standard materials:

- Covers – die cast aluminum
- Gaskets – polyethylene foam



| Cat. #              | Description  | Color  | Unit qty. | Wt. lbs. per 100 |
|---------------------|--|--------|-----------|------------------|
| TP7220 <sup>A</sup> | Two single receptacles and/or switches, 1.406" round                                       | Gray   | 10        | 62.7             |
| TP7222 <sup>B</sup> | Multi-use, two GFCI, duplex or 1.375" round or combination                                 | Gray   | 8         | 67.9             |
| TP7224 <sup>A</sup> | One single receptacle or switch (1.406" dia.) and one duplex, switch or combination device | Gray   | 10        | 60.2             |
| TP7228 <sup>A</sup> | Two duplex, switch or combination device   | Gray   | 10        | 60.3             |
| TP7229 <sup>A</sup> | Two duplex, switch or combination device   | White  | 10        | 60.3             |
| TP7230 <sup>A</sup> | Two duplex, switch or combination device   | Bronze | 10        | 60.3             |
| TP7244 <sup>C</sup> | Vertical GFCI and one single switch or receptacle  | Gray   | 10        | 61.5             |
| TP7248 <sup>A</sup> | Vertical GFCI and one duplex, switch or combination device                                 | Gray   | 10        | 59.4             |
| TP7249 <sup>A</sup> | Vertical GFCI and one duplex, switch or combination device                                 | White  | 10        | 59.4             |
| TP7250 <sup>A</sup> | Vertical GFCI and one duplex, switch or combination device                                 | Bronze | 10        | 59.4             |
| TP7252 <sup>A</sup> | Two GFCI   | Gray   | 10        | 58.4             |
| TP7270 <sup>A</sup> | Two vertical switches  | Gray   | 25        | 64.5             |
| TP7271 <sup>C</sup> | 20/30/50A receptacle, 2.125" round   | Gray   | 8         | 60.2             |

<sup>A</sup> UL Listed and CSA certified.

<sup>B</sup> cULus Listed.

<sup>C</sup> UL Listed.



# Weatherproof outlet covers

## Single-gang and two-gang toggle switch

### Applications:

- Used to provide weatherproof protection for an outdoor switch

### Features:

- Durable die cast aluminum construction for long product life
- Powder paint finish for corrosive environments
- Includes gasket and hardware

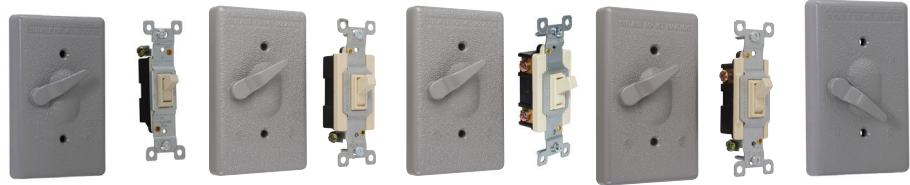
### Certifications and compliances:

- UL File No. E-121488
- CSA C22.2 No. 18
- cULus
- Complies with NEC Article 406.9(B)(1)
- NEMA 3R



### Standard materials:

- Covers – die cast aluminum
- Gaskets – polyethylene foam



TP7260  
5/8" thick

TP7277

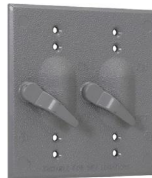
TP7278

TP7275

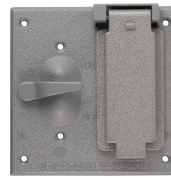
TP7280

#### SINGLE-GANG

| Cat. #              | Description   | Color  | Unit qty. | Wt. lbs. per 100 |
|---------------------|---|--------|-----------|------------------|
| TP7260 <sup>B</sup> | Toggle switch cover with SP 125V 15A switch                                     | Gray   | 50        | 26.8             |
| TP7261 <sup>B</sup> | Toggle switch cover with SP 125V 15A switch                                     | White  | 50        | 26.8             |
| TP7262 <sup>B</sup> | Toggle switch cover with SP 125V 15A switch                                     | Bronze | 50        | 26.8             |
| TP7280 <sup>A</sup> | Extended switch cover<br>(for use with commercial and residential grade switch) | Gray   | 50        | 17.7             |
| TP7281 <sup>A</sup> | Extended switch cover<br>(for use with commercial and residential grade switch) | White  | 50        | 17.7             |
| TP7282 <sup>A</sup> | Extended switch cover<br>(for use with commercial and residential grade switch) | Bronze | 50        | 17.7             |
| TP7277 <sup>B</sup> | Toggle switch cover with SP 125V 20A switch                                     | Gray   | 50        | 28.7             |
| TP7278 <sup>B</sup> | Toggle switch cover with DP 125V 20A switch                                     | Gray   | 50        | 28.3             |
| TP7275 <sup>B</sup> | Toggle switch cover with 3-way 125V 15A switch                                  | Gray   | 50        | 28.8             |



TP7268



TP7269



TP7272

#### TWO-GANG

| Cat. #              | Description                                       | Color | Unit qty. | Wt. lbs. per 100 |
|---------------------|---|-------|-----------|------------------|
| TP7268 <sup>C</sup> | Toggle switch cover                               | Gray  | 10        | 34.3             |
| TP7269 <sup>A</sup> | Vertical GFCI, toggle switch                      | Gray  | 8         | 47.0             |
| TP7272 <sup>B</sup> | Toggle switch cover with (2) SP 125V 15A switches | Gray  | 10        | 51.8             |

<sup>A</sup> UL Listed and CSA certified.

<sup>B</sup> cULus Listed.

<sup>C</sup> UL Listed.



# Weatherproof outlet covers

## Blank steel and lampholder

### Applications:

- Lampholder covers provide a mounting location for single-gang or 4" round weatherproof outlet box
- Blank steel covers provide weatherproof protection when box is not in use

### Features:

#### Lampholder cover:

- Durable die cast aluminum construction for long product life
- Provide mounting for lampholders and accessories
- Powder paint finish for corrosive environments
- Two- and three-hole covers include two closure plugs
- Includes gasket and hardware

#### Blank cover:

- Stamped steel
- Includes gasket and hardware

### Certifications and compliances:



- cULus File Nos. E-121488, E163827
- Complies with NEC Article 406.9(B)(1)
- NEMA 3R

### Standard materials:

- Blank covers – steel
- Lampholder covers – die cast aluminum



TP7292 - TP7294



TP7291



TP7296 - TP7298



TP7295



TP7158 - TP7160

#### BLANK STEEL

| Cat. # | Description             | Outlet holes | Color  | Unit qty. | Wt. lbs. per 100 |
|--------|-------------------------|--------------|--------|-----------|------------------|
| TP7292 | Single-gang             | –            | Gray   | 100       | 14.0             |
| TP7293 | Single-gang             | –            | White  | 100       | 14.0             |
| TP7294 | Single-gang             | –            | Bronze | 100       | 14.0             |
| TP7291 | Single-gang (box mount) | –            | Gray   | 20        | 14.4             |
| TP7296 | Two-gang                | –            | Gray   | 50        | 22.6             |
| TP7297 | Two-gang                | –            | White  | 50        | 22.6             |
| TP7298 | Two-gang                | –            | Bronze | 50        | 22.6             |
| TP7295 | Three-gang              | –            | Gray   | 25        | 31.6             |
| TP7158 | 4" round                | –            | Gray   | 50        | 24.0             |
| TP7159 | 4" round                | –            | White  | 50        | 24.0             |
| TP7160 | 4" round                | –            | Bronze | 50        | 24.0             |



TP7300 - TP7302



TP7304



TP7308 - TP7310



TP7312 - TP7314



TP7320 - TP7322

#### LAMPHOLDER

| Cat. # | Description | Outlet holes | Color  | Unit qty. | Wt. lbs. per 100 |
|--------|-------------|--------------|--------|-----------|------------------|
| TP7300 | 4" round    | 1 - 1/2"     | Gray   | 25        | 12.0             |
| TP7301 | 4" round    | 1 - 1/2"     | White  | 25        | 12.0             |
| TP7302 | 4" round    | 1 - 1/2"     | Bronze | 25        | 12.0             |
| TP7304 | 4" round    | 2 - 1/2"     | Gray   | 25        | 15.7             |
| TP7305 | 4" round    | 2 - 1/2"     | White  | 25        | 15.7             |
| TP7306 | 4" round    | 2 - 1/2"     | Bronze | 25        | 15.7             |
| TP7308 | 4" round    | 3 - 1/2"     | Gray   | 25        | 15.4             |
| TP7309 | 4" round    | 3 - 1/2"     | White  | 25        | 15.4             |
| TP7310 | 4" round    | 3 - 1/2"     | Bronze | 25        | 15.4             |
| TP7312 | Rectangular | 1 - 1/2"     | Gray   | 25        | 11.5             |
| TP7313 | Rectangular | 1 - 1/2"     | White  | 25        | 11.5             |
| TP7314 | Rectangular | 1 - 1/2"     | Bronze | 25        | 11.5             |
| TP7316 | Rectangular | 2 - 1/2"     | Gray   | 25        | 14.5             |
| TP7317 | Rectangular | 2 - 1/2"     | White  | 25        | 14.5             |
| TP7318 | Rectangular | 2 - 1/2"     | Bronze | 25        | 14.5             |
| TP7320 | Rectangular | 3 - 1/2"     | Gray   | 25        | 14.7             |
| TP7321 | Rectangular | 3 - 1/2"     | White  | 25        | 14.7             |
| TP7322 | Rectangular | 3 - 1/2"     | Bronze | 25        | 14.7             |

Weatherproof

# Receptacle/cover combinations and complete kits

## Applications:

- Receptacle kits are used to provide weatherproof protection for included devices

## Features:

- Suitable for use in wet locations when cover is closed
- Durable die cast aluminum construction for long product life
- Complete kits offer universal mounting
- Powder paint finish for corrosive environments
- Includes gasket, hardware and closure plugs

## Certifications and compliances:

- cULus File No. E-324138
- Complies with NEC Article 406.9(B)(1)
- NEMA 3R



## Standard materials:

- Outlet boxes and covers – die cast aluminum
- Gaskets – polyethylene foam



TP7279



TP7400



TP7404

| Cat. # | Description   | Outlet holes | Box depth | Mounting orientation | Color  | Unit qty. | Wt. lbs. per 100 |
|--------|---|--------------|-----------|----------------------|--------|-----------|------------------|
| TP7279 | Single-gang multi-use cover with SP 125V 15A switch (mounting ears removed) | –            | –         | Vertical             | Gray   | 8         | 26.8             |
| TP7400 | Single-gang box, universal cover, 15A TRWR duplex receptacle                | 3 - 1/2"     | 2"        | Vertical/horizontal  | Gray   | 6         | 85.6             |
| TP7401 | Single-gang box, universal cover, 15A TRWR duplex receptacle                | 3 - 1/2"     | 2"        | Vertical/horizontal  | White  | 4         | 85.6             |
| TP7402 | Single-gang box, universal cover, 15A TRWR duplex receptacle                | 3 - 1/2"     | 2"        | Vertical/horizontal  | Bronze | 6         | 85.6             |
| TP7403 | Single-gang box, universal cover, 15A TRWR duplex receptacle                | 3 - 1/2"     | 2"        | Vertical/horizontal  | Black  | 6         | 85.6             |
| TP7404 | Single-gang box, universal cover, 15A TRWR GFCI receptacle                  | 3 - 1/2"     | 2"        | Vertical/horizontal  | Gray   | 6         | 97.2             |
| TP7405 | Single-gang box, universal cover, 15A TRWR GFCI receptacle                  | 3 - 1/2"     | 2"        | Vertical/horizontal  | White  | 6         | 97.2             |
| TP7406 | Single-gang box, universal cover, 15A TRWR GFCI receptacle                  | 3 - 1/2"     | 2"        | Vertical/horizontal  | Bronze | 6         | 97.2             |

# Extra duty non-metallic while-in-use covers

Eaton exclusive

## Applications:

- Designed to provide weatherproof protection while an outlet is in use

## Features:

- Corrosion-resistant, non-conductive UV-rated polycarbonate for long outdoor life
- Corner ball joint hinge for true universal mounting capability
- No disassembly required for vertical or horizontal mounting orientation
- Adapters for decorator and GFCI devices, duplex receptacles, switches and round receptacles
- Keyhole provision for easy mounting
- Pre-installed gasket, mounting hardware and installation instructions included
- Easy to close lockable cover

## Certifications and compliances:

- cULus – File Nos. E102328 & E15022
- cCSAus
- Complies with NEC Article 406.9(B)(1)
- NEMA 3R



## Standard materials:

- Body and cover – polycarbonate
- Gaskets – polyethylene foam



WIU1T1



WIU1G1



WIU1DT1



WIU1DG1



WIU2DT1



WIU2DG1

### 16:1 single-gang configurations



1-1/4" – 2-1/8"

### 55:1 double-gang configurations



1-1/4" – 2-1/2"

1-1/4" – 1-3/4"

1-1/4" – 1-3/4"

| Cat. #  | Gang | Description      | Mounting            | Color            | Depth  | Unit qty. | Wt. lbs. per 100 |
|---------|------|------------------|---------------------|------------------|--------|-----------|------------------|
| WIU1T1  | 1    | Extra duty, 16:1 | Horizontal/vertical | Transparent gray | 2.25"  | 6         | 31.7             |
| WIU1G1  | 1    | Extra duty, 16:1 | Horizontal/vertical | Gray             | 2.25"  | 6         | 31.7             |
| WIU1W1  | 1    | Extra duty, 16:1 | Horizontal/vertical | White            | 2.25"  | 6         | 31.7             |
| WIU1B1  | 1    | Extra duty, 16:1 | Horizontal/vertical | Bronze           | 2.25"  | 6         | 31.7             |
| WIU1DT1 | 1    | Extra duty, 16:1 | Horizontal/vertical | Transparent gray | 3.125" | 5         | 36.1             |
| WIU1DG1 | 1    | Extra duty, 16:1 | Horizontal/vertical | Gray             | 3.125" | 5         | 36.1             |
| WIU1DW1 | 1    | Extra duty, 16:1 | Horizontal/vertical | White            | 3.125" | 5         | 36.1             |
| WIU1DB1 | 1    | Extra duty, 16:1 | Horizontal/vertical | Bronze           | 3.125" | 5         | 36.1             |
| WIU2DT1 | 2    | Extra duty, 55:1 | Vertical            | Transparent gray | 3.125" | 3         | 47.8             |
| WIU2DG1 | 2    | Extra duty, 55:1 | Vertical            | Gray             | 3.125" | 3         | 47.8             |
| WIU2DW1 | 2    | Extra duty, 55:1 | Vertical            | White            | 3.125" | 3         | 47.8             |
| WIU2DB1 | 2    | Extra duty, 55:1 | Vertical            | Bronze           | 3.125" | 3         | 47.8             |

Weatherproof

# Extra duty metallic while-in-use covers

Eaton exclusive

## Applications:

- Designed to provide weatherproof protection while an outlet is in use

## Features:

- Durable die cast, powder coated aluminum construction
- Corner ball joint hinge for true universal mounting capability
- No disassembly required for vertical or horizontal mounting orientation
- Adapters for decorator and GFCI devices, duplex receptacles, switches and round receptacles
- Keyhole provision for easy mounting
- Pre-installed gasket, mounting hardware and installation instructions included
- Easy to close lockable cover

## Certifications and compliances:

- cULus – File Nos. E102328 & E15022
- cCSAus
- Complies with NEC Article 406.9(B)(1)
- NEMA 3R



WIUM1B1



WIUM1DG1



WIUM2DG1

### 16:1 single-gang configurations



1-1/4" – 2-1/8"

### 55:1 double-gang configurations



1-1/4" – 2-1/2"

1-1/4" – 1-3/4"

1-1/4" – 1-3/4"

| Cat. #   | Gang | Description      | Mounting            | Color  | Depth  | Unit qty. | Wt. lbs. per 100 |
|----------|------|------------------|---------------------|--------|--------|-----------|------------------|
| WIUM1G1  | 1    | Extra duty, 16:1 | Horizontal/vertical | Gray   | 2.25"  | 6         | 60.0             |
| WIUM1W1  | 1    | Extra duty, 16:1 | Horizontal/vertical | White  | 2.25"  | 6         | 60.0             |
| WIUM1B1  | 1    | Extra duty, 16:1 | Horizontal/vertical | Bronze | 2.25"  | 6         | 60.0             |
| WIUM1DG1 | 1    | Extra duty, 16:1 | Horizontal/vertical | Gray   | 3.125" | 5         | 70.5             |
| WIUM1DW1 | 1    | Extra duty, 16:1 | Horizontal/vertical | White  | 3.125" | 5         | 70.5             |
| WIUM1DB1 | 1    | Extra duty, 16:1 | Horizontal/vertical | Bronze | 3.125" | 5         | 70.5             |
| WIUM2DG1 | 2    | Extra duty, 55:1 | Vertical            | Gray   | 3.125" | 3         | 84.6             |
| WIUM2DW1 | 2    | Extra duty, 55:1 | Vertical            | White  | 3.125" | 3         | 84.6             |
| WIUM2DB1 | 2    | Extra duty, 55:1 | Vertical            | Bronze | 3.125" | 3         | 84.6             |

Weatherproof

# Extra duty low profile while-in-use covers

## Applications:

- Low profile design that provides weatherproof protection while an outlet is in use and the cover is closed

## Features:

- Corrosion-resistant, non-conductive UV-rated polycarbonate for long outdoor life
- Horizontal and vertical mounting options
- No cord bending inside the cover
- Adapters for duplex and GFCI receptacles included
- Rated for 15A
- Easy to close lockable cover
- Pre-installed gasket, mounting hardware and installation instructions included

## Certifications and compliances:

- cCSAus
- Complies with NEC Article 406.9(B)(1)
- NEMA 3R



## Standard materials:

- Body and cover – polycarbonate
- Gaskets – polyethylene foam



WIUS1VW1



WIUS1VG1



WIUS1HT1



WIUS1HG1

| Cat. #   | Gang | Description             | Mounting   | Color            | Depth  | Unit qty. | Wt. lbs. per 100 |
|----------|------|-------------------------|------------|------------------|--------|-----------|------------------|
| WIUS1VT1 | 1    | Extra duty, low profile | Vertical   | Transparent gray | 1.562" | 6         | 45.2             |
| WIUS1VG1 | 1    | Extra duty, low profile | Vertical   | Gray             | 1.562" | 6         | 45.2             |
| WIUS1VW1 | 1    | Extra duty, low profile | Vertical   | White            | 1.562" | 6         | 45.2             |
| WIUS1HT1 | 1    | Extra duty, low profile | Horizontal | Transparent gray | 1.562" | 5         | 58.2             |
| WIUS1HG1 | 1    | Extra duty, low profile | Horizontal | Gray             | 1.562" | 5         | 58.2             |
| WIUS1HW1 | 1    | Extra duty, low profile | Horizontal | White            | 1.562" | 5         | 58.2             |

Weatherproof

# Extra duty recessed while-in-use covers

## Applications:

- Replaces separate installation of outlet box, siding guard and while-in-use cover

## Features:

- One-piece assembly replaces separate installations
- Corrosion-resistant, non-conductive UV-rated polycarbonate for long outdoor life
- Horizontal and vertical mounting options with corner opening for cord
- Rough-in style weatherproof box
- For use with siding and brick exteriors
- Adaptable for duplex, GFCI and round receptacles
- Easy to close lockable cover



WIUR1T1



WIUR1G1

### 6:1 single-gang configurations



1-3/8"

## Certifications and compliances:



- cCSAus
- Complies with NEC Article 406.9(B)(1)
- NEMA 3R

## Standard materials:

- Body and cover – polycarbonate
- Gaskets – polyethylene foam

| Cat. #  | Gang | Description               | Mounting            | Color            | Inward depth | Total depth | Unit qty. | Wt. lbs. per 100 |
|---------|------|---------------------------|---------------------|------------------|--------------|-------------|-----------|------------------|
| WIUR1T1 | 1    | Extra duty, recessed, 6:1 | Horizontal/vertical | Transparent gray | 2.75"        | 4.8"        | 2         | 111.0            |
| WIUR1G1 | 1    | Extra duty, recessed, 6:1 | Horizontal/vertical | Gray             | 2.75"        | 4.8"        | 2         | 111.0            |
| WIUR1W1 | 1    | Extra duty, recessed, 6:1 | Horizontal/vertical | White            | 2.75"        | 4.8"        | 2         | 111.0            |
| WIUR1B1 | 1    | Extra duty, recessed, 6:1 | Horizontal/vertical | Bronze           | 2.75"        | 4.8"        | 2         | 111.0            |

# Extra duty while-in-use kits

Eaton exclusive

## Applications:

- While-in-use cover kits are used to provide weatherproof protection for included devices

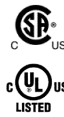
## Features:

- Kits include single-gang outlet box, in-use cover and 15A TRWR GFCI device
- Corner ball joint hinge for true universal mounting capability
- Includes pre-installed gasket, mounting hardware and closure plugs
- Easy to close lockable cover



## Certifications and compliances:

- cULus – File No. E324733
- cCSAus
- Complies with NEC Article 406.9(B)(1)
- NEMA 3R



## Standard materials:

- Outlet boxes – die cast aluminum
- Metallic covers – die cast aluminum
- Non-metallic covers – polycarbonate
- Gaskets – polyethylene foam

### NON-METALLIC IN-USE COVER KITS

| Cat. #   | Description  | Mounting            | Color            | Outlet holes | Box depth | Unit qty. | Wt. lbs. per 100 |
|----------|--|---------------------|------------------|--------------|-----------|-----------|------------------|
| WIUKGFC1 | Single-gang box and in-use cover, 15A TRWR GFCI receptacle | Horizontal/vertical | Transparent gray | 3 - 1/2"     | 3 - 1/8"  | 4         | 108.9            |
| WIUKGFG1 | Single-gang box and in-use cover, 15A TRWR GFCI receptacle | Horizontal/vertical | Gray             | 3 - 1/2"     | 3 - 1/8"  | 4         | 108.9            |

### METALLIC IN-USE COVER KIT

| Cat. #    | Description  | Mounting            | Color | Outlet holes | Box depth | Unit qty. | Wt. lbs. per 100 |
|-----------|--|---------------------|-------|--------------|-----------|-----------|------------------|
| WIUKMGFG1 | Single-gang box and in-use cover, 15A TRWR GFCI receptacle | Horizontal/vertical | Gray  | 3 - 1/2"     | 3 - 1/8"  | 4         | 140.2            |

Weatherproof



# Weatherproof LED

## Applications:

- LED weatherproof luminaires combine the energy efficiency of LED technology with rugged weatherproof construction to provide a versatile residential or commercial outdoor lighting solution

## Features:

- Durable die cast aluminum construction for long product life
- Tool-free adjustable head lamps
- Powder paint finish for corrosive environments
- 3000K warm white color
- Voltage – 120/277V
- Long life, up to 12 years
- Closure plugs, gasket and hardware included
- Suitable for wet locations

## Certifications and compliances:



- cULus Listed
- UL File Nos. E470512 and E514227

## Standard materials:

- Luminaire housing – die cast aluminum
- Lens – polycarbonate

## Standard finish:

- Painted powder coat



TPLEDSL7G



TPLED12G



TPLEDK24G

### SINGLE LUMINAIRES

| Cat. #   | Description            | Lumens | Color  | Size / outlet holes | Unit qty. | Wt. lbs. per 100 |
|----------|------------------------|--------|--------|---------------------|-----------|------------------|
| TPLED12G | (1) 12W LED lampholder | 1,000  | Gray   | 1/2"                | 4         | 155.0            |
| TPLED12W | (1) 12W LED lampholder | 1,000  | White  | 1/2"                | 4         | 155.0            |
| TPLED12B | (1) 12W LED lampholder | 1,000  | Bronze | 1/2"                | 4         | 155.0            |

### KITS

| Cat. #     | Description                                | Lumens | Color  | Size / outlet holes | Unit qty. | Wt. lbs. per 100 |
|------------|--|--------|--------|---------------------|-----------|------------------|
| TPLEDK24G  | (2) 12W LED lights, 4" round box and cover | 2,000  | Gray   | 5 - 1/2"            | 2         | 252.9            |
| TPLEDK24W  | (2) 12W LED lights, 4" round box and cover | 2,000  | White  | 5 - 1/2"            | 2         | 252.9            |
| TPLEDK24BR | (2) 12W LED lights, 4" round box and cover | 2,000  | Bronze | 5 - 1/2"            | 2         | 252.9            |
| TPLEDK24BK | (2) 12W LED lights, 4" round box and cover | 2,000  | Black  | 5 - 1/2"            | 2         | 252.9            |

### SPIKE LIGHTS

| Cat. #    | Description            | Lumens | Color  | Size / outlet holes | Unit qty. | Wt. lbs. per 100 |
|-----------|------------------------|--------|--------|---------------------|-----------|------------------|
| TPLEDSL7G | (1) 7W LED spike light | 500    | Gray   | –                   | 6         | 97.9             |
| TPLEDSL7W | (1) 7W LED spike light | 500    | White  | –                   | 6         | 97.9             |
| TPLEDSL7B | (1) 7W LED spike light | 500    | Bronze | –                   | 6         | 97.9             |

# Lampholders and accessories

## Applications:

- For use in outdoor lighting applications

## Features:

- Durable die cast construction
- Adjustable lampholders
- For use with Par38 bulb (150W maximum)
- Includes installation hardware, gasket, closure plugs and instructions

## Certifications and compliances:

- UL File No. E195204
- CSA C22.2 No. 250.0-08
- cULus

## Standard material:

- Die cast aluminum



TP7162 - TP7165



TP7166



TP7178



TP7186



TP7188 (aluminum)

| Cat. #            | Description   | Color   | Unit qty. | Wt. lbs. per 100 |
|-------------------|---|---------|-----------|------------------|
| TP7162 <b>A U</b> | Universal par lampholder                              | Natural | 36        | 30.6             |
| TP7163 <b>A U</b> | Universal par lampholder                              | Gray    | 36        | 30.9             |
| TP7164 <b>A U</b> | Universal par lampholder                              | White   | 36        | 30.9             |
| TP7165 <b>A U</b> | Universal par lampholder                              | Bronze  | 36        | 30.9             |
| TP7166 <b>A U</b> | Universal par lampholder with external gasket         | Gray    | 36        | 33.6             |
| TP7170            | External gasket only                                  | Black   | 100       | 4.8              |
| TP7178 <b>B U</b> | Universal par lampholder with reflector               | Gray    | 6         | 41.8             |
| TP7186 <b>B</b>   | Portable par lampholder with 6' cord                  | Gray    | 12        | 73.5             |
| TP7188            | 2-1/2" outside dia. pole fitter with 1/2" male thread | Gray    | 24        | 57.6             |

**A** UL Listed and CSA certified.

**B** cULus Listed.

**U** Third party certified for use with CFL and LED lamps.

Weatherproof

# Motion sensors

## Applications:

- For use with LED or standard lighting kits in outdoor applications

## Features:

- Motion detection with Passive Infrared Technology (PIR)
- Set for motion detection or dusk to dawn
- 240 degree field of view
- Adjustable sensitivity from 5 to 70 feet
- Selectable ON time (Test, 1, 5 or 20 minutes)



## Certifications and compliances:

- cULus Listed
- UL File No. E-464470



### Sensitivity



### On-Time



### Set Mode



## Standard material:

- Non-metallic

| Cat. # | Description       | Color  | Unit qty. | Wt. lbs. per 100 |
|--------|-------------------|--------|-----------|------------------|
| WPMSG  | MOTION SENSOR GRY | Gray   | 2         | 33.1             |
| WPMSBR | MOTION SENSOR BZ  | Bronze | 2         | 33.1             |
| WPMSW  | MOTION SENSOR WHT | White  | 2         | 33.1             |

Weatherproof

# Lampholder combinations

## Applications:

- For use in outdoor lighting applications with single-gang rectangular or 4" round weatherproof box

## Features:

- Durable die cast construction
- Adjustable lampholders
- For use with Par38 bulb (150W maximum)
- Certified for use with CFL and LED lamps
- Includes installation hardware, gasket, closure plugs and instructions

## Certifications and compliances:

- cULus
- UL File No. E195204



## Standard material:

- Die cast aluminum



TP7325



TP7334

### RECTANGULAR COVER COMBINATIONS

| Cat. # | Description        | Outlet holes | Color  | Unit qty. | Wt. lbs. per 100 |
|--------|--------------------|--------------|--------|-----------|------------------|
| TP7325 | (1) par lampholder | 1 - 1/2"     | Gray   | 8         | 42.1             |
| TP7334 | (2) par lampholder | 3 - 1/2"     | Gray   | 8         | 76.2             |
| TP7335 | (2) par lampholder | 3 - 1/2"     | White  | 8         | 76.2             |
| TP7333 | (2) par lampholder | 3 - 1/2"     | Bronze | 8         | 76.2             |



TP7328



TP7330 - TP7332

### 4" ROUND COVER COMBINATIONS

| Cat. # | Description        | Outlet holes | Color  | Unit qty. | Wt. lbs. per 100 |
|--------|--------------------|--------------|--------|-----------|------------------|
| TP7328 | (1) par lampholder | 1 - 1/2"     | Gray   | 8         | 42.6             |
| TP7329 | (1) par lampholder | 1 - 1/2"     | White  | 8         | 42.6             |
| TP7327 | (1) par lampholder | 1 - 1/2"     | Bronze | 8         | 42.6             |
| TP7330 | (2) par lampholder | 3 - 1/2"     | Gray   | 10        | 81.4             |
| TP7331 | (2) par lampholder | 3 - 1/2"     | White  | 10        | 81.4             |
| TP7332 | (2) par lampholder | 3 - 1/2"     | Bronze | 10        | 81.4             |

Weatherproof

# Lampholder kits

## Applications:

- For use in outdoor lighting applications

## Features:

- Ready to install lighting kit
- Durable die cast construction
- Adjustable lampholders
- For use with Par38 bulb (150W maximum)
- Certified for use with CFL and LED lamps
- Includes installation hardware, gasket, closure plugs and instructions



TP7340



TP7345

| Cat. # | Description                            | Outlet holes | Color | Unit qty. | Wt. lbs. per 100 |
|--------|--|--------------|-------|-----------|------------------|
| TP7340 | Box, cover, (2) lampholders            | 2 - 1/2"     | Gray  | 4         | 129.0            |
| TP7345 | Box, cover, photocell, (2) lampholders | 2 - 1/2"     | Gray  | 4         | 163.4            |
| TP7346 | Box, cover, photocell, (2) lampholders | 2 - 1/2"     | White | 4         | 163.4            |

## Certifications and compliances:

- cULus
- UL File No. E195204



## Standard material:

- Die cast aluminum

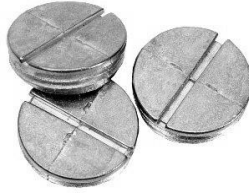
Weatherproof

# Weatherproof accessories

## CLOSURE PLUGS

### Applications:

- For use with all weatherproof boxes, adapters and lampholder/combination covers to seal unused outlets



### Certifications and compliances:

- cULus
- UL File No. E121487



### Standard materials:

- Zinc die cast or polycarbonate

| Cat. # | Description | Material | Color  | Unit qty. | Wt. lbs. per 100 |
|--------|-------------|----------|--------|-----------|------------------|
| TP7940 | 1/2"        | Zinc     | Gray   | 100       | 1.2              |
| TP7941 | 1/2"        | Plastic  | White  | 100       | 0.3              |
| TP7942 | 1/2"        | Plastic  | Bronze | 100       | 0.3              |
| TP7944 | 3/4"        | Zinc     | Gray   | 50        | 1.8              |
| TP7945 | 3/4"        | Plastic  | White  | 50        | 0.4              |
| TP7946 | 3/4"        | Plastic  | Bronze | 50        | 0.4              |
| TP7948 | 1"          | Zinc     | Gray   | 50        | 2.8              |

## REPLACEMENT GASKETS

### Applications:

- For weatherproof boxes and covers
- Single- and two-gang gaskets can accommodate duplex, GFCI, round and switch devices



TPG1



TPG2



TRPG1

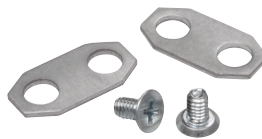
### Standard material:

- Polyethylene foam

| Cat. # | Description     | Color | Unit qty. | Wt. lbs. per 100 |
|--------|-----------------|-------|-----------|------------------|
| TPG1   | (2) single-gang | Black | 20        | 0.4              |
| TPG2   | (2) two-gang    | Black | 20        | 0.7              |
| TRPG1  | (2) 4" round    | Black | 50        | 0.3              |

## WEATHERPROOF MOUNTING HARDWARE KIT

| Cat. # | Description              | Unit qty. | Wt. lbs. per 100 |
|--------|--------------------------|-----------|------------------|
| WPMH1  | Lugs and mounting screws | 1         | 1.2              |



WPMH1

Weatherproof



### Bogotá Sala de Ventas

Carrera 12 No 13 - 46  
PBX: 6013360755 - 6013412439  
Celular: 312 3055335

### Centro de Distribución

Carrera 18 No 19A - 36  
PBX: 6013360755 EXT: 2101