

Loadbreak Apparatus Connectors

200 A 15 kV Class Insulated Protective Cap

GENERAL

The Cooper Power Systems RTE® Insulated Protective Cap is an accessory device designed to electrically insulate and mechanically seal loadbreak bushing interfaces. When mated to a loadbreak product and the drain wire is attached to ground, the Insulated Protective Cap provides a fully shielded, submersible insulating cover for energized bushings. The cap can be used for permanent or temporary installation on bushings, junctions or feedthru devices that meet the requirements of ANSI/IEEE Standard 386.

INSTALLATION

No special tools are required. A shotgun stick tool is used to place the protective cap on an exposed bushing interface. Refer to Installation Instruction Sheet S500-21-1 for details.

PRODUCTION TESTS

Tests are conducted in accordance with ANSI/IEEE Standard 386-1995.

- ac 60 Hz 1 Minute Withstand – 34 kV
- Minimum Corona Voltage Level – 11 kV

Tests are conducted in accordance with Cooper Power Systems requirements.

- Physical Inspection
- Periodic Dissection
- Periodic Fluoroscopic Analysis

TABLE 1
Voltage Ratings and Characteristics

Description	kV
Standard Voltage Class	15
Maximum Rating Phase-to-Phase	14.4
Maximum Rating Phase-to-Ground	8.3
ac 60 Hz 1 Minute Withstand	34
dc 15 Minute Withstand	53
BIL and Full Wave Crest	95
Minimum Corona Voltage Level	11

Voltage ratings and characteristics are in accordance with ANSI/IEEE Standard 386-1995.



Figure 1. Insulated Protective Cap electrically insulates and mechanically seals loadbreak bushing interfaces.

ORDERING INFORMATION
To order the 15 kV Class Insulated Protective Cap Kit, refer to Table 2.

TABLE 2
Insulated Protective Cap Kit

Description	Catalog Number
Protective Cap	LPC 215

Each kit contains:

- Protective Cap with stranded copper ground wire
- Silicone Lubricant
- Installation Instruction Sheet

Features and Detailed Description

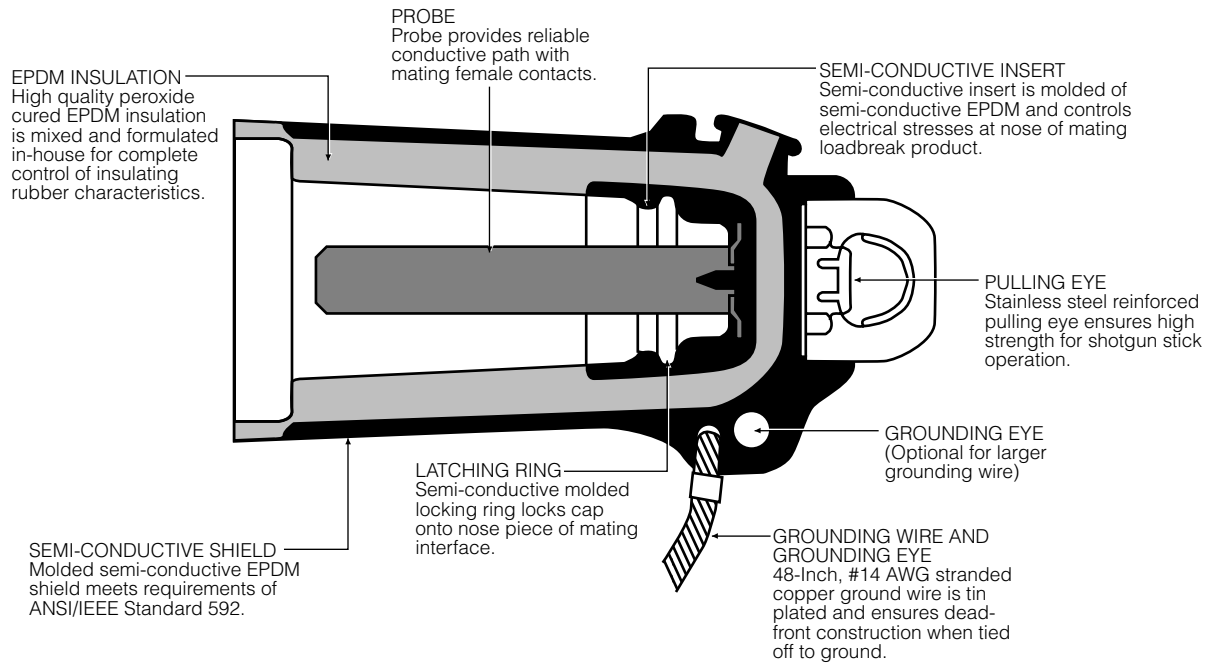


Figure 2.
Illustration shows construction of insulated protective cap.

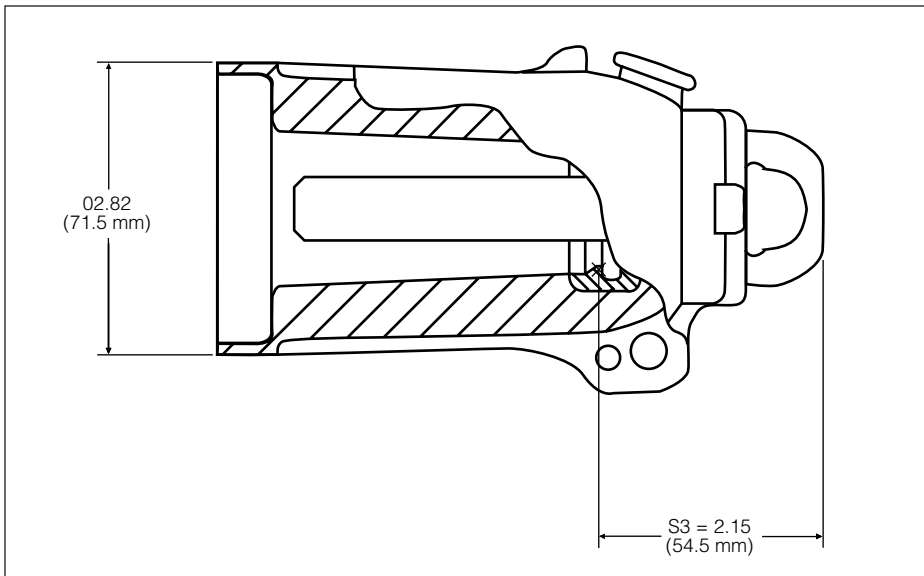


Figure 3.
15 kV Insulated Protective Cap profile and stacking dimensions.



Bogotá Sala de Ventas

Carrera 12 No 13 - 46
PBX: 6013360755 - 6013412439
Celular: 312 3055335

Centro de Distribución

Carrera 18 No 19A - 36
PBX: 6013360755 EXT: 2101

COOPER Power Systems