

ALUMINUM COMPRESSION NARROW PALM LUGS

Dual Rated Aluminum Crimp Lugs 1 Hole, 2 Holes Lugs



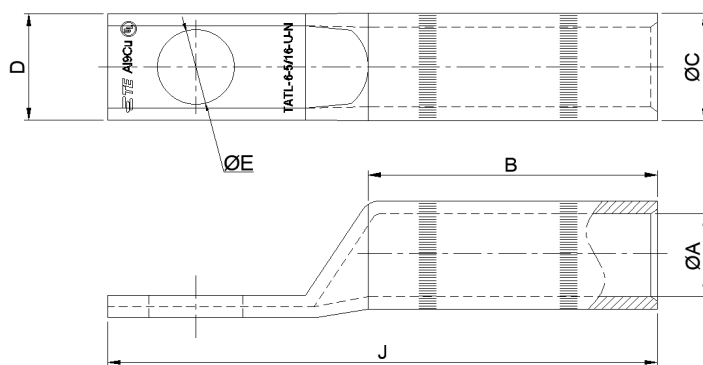
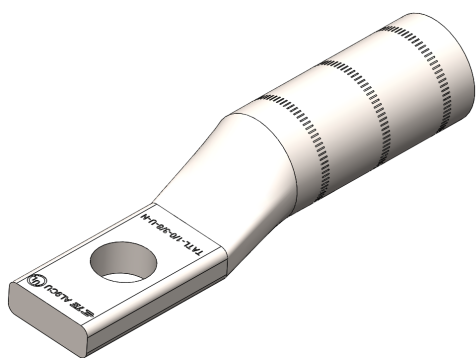
TE Connectivity's (TE), crimp type compression lugs are made from high conductivity aluminum. They are electro-tin plated to resist electrolytic corrosion. They are suitable in applications from 600 V to 35 kV. Compression lugs are available to accommodate a broad range of cable sizes from #1/0 AWG to 1500 kmcil in both copper and aluminum material, in one- or two-hole configurations.

The barrels are chamfered or you can say chamfered for easy entry of the conductor and pre-filled with oxide inhibitor compound to prevent contamination. The long barrel length provides extra contact with the conductor, post crimping. Every barrel cap is color-coded to the proper die for error-free die selection. It prevents the Inhibitor from getting contaminated before installation.

Key Features

- Easy to install with industry standard tooling
- Electro tin-plated for electrolytic corrosion resistance and durability
- Industry standard color coded barrel ends and caps simplify die selection and prevent contamination of Oxide-Inhibiting compound
- For 600 V to 35 kV applications
- Suitable with both aluminum and copper conductors

Aluminum Compression Narrow Palm Lugs



Description	Conductor AWG/MCM	Dimensions in inch (mm)					
		E	A	C	B	D	J
TATL-1/0-5/16-U-N	1/0 AWG	5/16	0.41 (10.5)	0.64 (16.26)	1.18 (30.0)	0.69 (18.0)	3.12 (79.25)
TATL-1/0-3/8-U-N	1/0 AWG	3/8	0.41 (10.5)	0.64 (16.26)	1.18 (30.0)	0.69 (18.0)	3.12 (79.25)
TATL-2/0-5/16-U-N	2/0 AWG	5/16	0.44 (11.2)	0.69 (17.53)	1.3 (33.0)	0.69 (18.0)	3.19 (81.03)
TATL-2/0-3/8-U-N	2/0 AWG	3/8	0.44 (11.2)	0.69 (17.53)	1.3 (33.0)	0.69 (18.0)	3.19 (81.03)
TATL-3/0-5/16-U-N	3/0 AWG	5/16	0.48 (12.3)	0.76 (19.31)	1.5 (38.1)	0.76 (19.0)	3.44 (87.4)
TATL-3/0-3/8-U-N	3/0 AWG	3/8	0.48 (12.3)	0.76 (19.31)	1.5 (38.1)	0.76 (19.0)	3.44 (87.4)
TATL-3/0-1/2-U-N	3/0 AWG	1/2	0.48 (12.3)	0.76 (19.31)	1.5 (38.1)	0.76 (19.0)	3.44 (87.4)
TATL-4/0-3/8-U-N	4/0 AWG	3/8	0.54 (13.72)	0.87 (22.1)	1.44 (36.6)	1.0 (25.4)	3.56 (90.43)
TATL-4/0-1/2-U-N	4/0 AWG	1/2	0.54 (13.72)	0.87 (22.1)	1.44 (36.6)	1.0 (25.4)	3.56 (90.43)
TATL-250-3/8-U-N	250 MCM	3/8	0.59 (15.1)	0.91 (23.0)	1.56 (39.6)	1.0 (25.4)	3.62 (91.95)
TATL-250-1/2-U-N	250 MCM	1/2	0.59 (15.1)	0.91 (23.0)	1.56 (39.6)	1.0 (25.4)	3.62 (91.95)
TATL-300-3/8-U-N	300 MCM	3/8	0.65 (16.51)	1.01 (25.66)	2.19 (55.6)	1.0 (25.4)	4.0 (101.6)
TATL-300-1/2-U-N	300 MCM	1/2	0.65 (16.51)	1.01 (25.66)	2.19 (55.6)	1.0 (25.4)	4.0 (101.6)
TATL-350-3/8-U-N	350 MCM	3/8	0.72 (18.3)	1.11 (28.1)	2.19 (55.6)	1.07 (27.3)	4.26 (108.21)
TATL-350-1/2-U-N	350 MCM	1/2	0.72 (18.3)	1.11 (28.1)	2.19 (55.6)	1.07 (27.3)	4.26 (108.21)
TATL-400-1/2-U-N	400 MCM	1/2	0.76 (19.4)	1.18 (30.0)	2.5 (63.5)	1.16 (29.4)	5.0 (127.1)
TATL-400-5/8-U-N	400 MCM	5/8	0.76 (19.4)	1.18 (30.0)	2.5 (63.5)	1.16 (29.4)	5.0 (127.1)
TATL-500-1/2-U-N	500 MCM	1/2	0.84 (21.4)	1.32 (33.53)	2.94 (74.68)	1.31 (33.0)	5.44 (138.2)
TATL-500-5/8-U-N	500 MCM	5/8	0.84 (21.4)	1.32 (33.53)	2.94 (74.68)	1.31 (33.0)	5.44 (138.2)
TATL-600-1/2-U-N	600 MCM	1/2	0.92 (23.4)	1.44 (36.58)	3.0 (76.2)	1.31 (33.0)	5.55 (141.0)
TATL-600-5/8-U-N	600 MCM	5/8	0.92 (23.4)	1.44 (36.58)	3.0 (76.2)	1.31 (33.0)	5.55 (141.0)
TATL-750-1/2-U-N	750 MCM	1/2	1.03 (26.2)	1.5 (38.1)	3.32 (84.33)	1.43 (36.3)	6.38 (162.1)
TATL-750-5/8-U-N	750 MCM	5/8	1.03 (26.2)	1.5 (38.1)	3.32 (84.33)	1.43 (36.3)	6.38 (162.1)

Aluminum Compression Narrow Palm Lugs

Dual Rated Aluminium Crimp Lugs - One Hole Narrow Palm

Description	Conductor AWG/MCM	Dimensions in inch (mm)					
		E	A	C	B	D	J
TATL-1000-1/2-U-N	1000 MCM	1/2	1.19 (30.3)	1.84 (46.8)	4.62 (117.3)	1.65 (42.0)	7.94 (201.6)
TATL-1000-9/16-U-N	1000 MCM	9/16	1.19 (30.3)	1.84 (46.8)	4.62 (117.3)	1.65 (42.0)	7.94 (201.6)
TATL-1000-5/8-U-N	1000 MCM	5/8	1.19 (30.3)	1.84 (46.8)	4.62 (117.3)	1.65 (42.0)	7.94 (201.6)
TATL-1000-3/4-U-N	1000 MCM	3/4	1.19 (30.3)	1.84 (46.8)	4.62 (117.3)	1.65 (42.0)	7.94 (201.6)
TATL-1250-1/2-N	1250 MCM	1/2	1.33 (33.7)	1.84 (46.8)	4.62 (117.3)	1.81 (46.0)	7.94 (201.6)
TATL-1250-9/16-N	1250 MCM	9/16	1.33 (33.7)	1.84 (46.8)	4.62 (117.3)	1.81 (46.0)	7.94 (201.6)
TATL-1250-5/8-N	1250 MCM	5/8	1.33 (33.7)	1.84 (46.8)	4.62 (117.3)	1.81 (46.0)	7.94 (201.6)
TATL-1250-3/4-N	1250 MCM	3/4	1.33 (33.7)	1.84 (46.8)	4.62 (117.3)	1.81 (46.0)	7.94 (201.6)
TATL-1500-1/2-N	1500 MCM	1/2	1.5 (38.0)	2.24 (57.0)	4.62 (117.3)	2.28 (58.0)	8.15 (207.0)
TATL-1500-9/16-N	1500 MCM	9/16	1.5 (38.0)	2.24 (57.0)	4.62 (117.3)	2.28 (58.0)	8.15 (207.0)
TATL-1500-5/8-N	1500 MCM	3/4	1.5 (38.0)	2.24 (57.0)	4.62 (117.3)	2.28 (58.0)	8.15 (207.0)
TATL-1500-3/4-N	1500 MCM	1/2	1.5 (38.0)	2.24 (57.0)	4.62 (117.3)	2.28 (58.0)	8.15 (207.0)

TATL 1/0 TO TATL 750

TATL 1/0 TO TATL 1000

TATL 1000 TO TATL 1500

TATL 1/0 TO TATL 750

TATL 1/0 TO TATL 750



FILE NO. : E13288



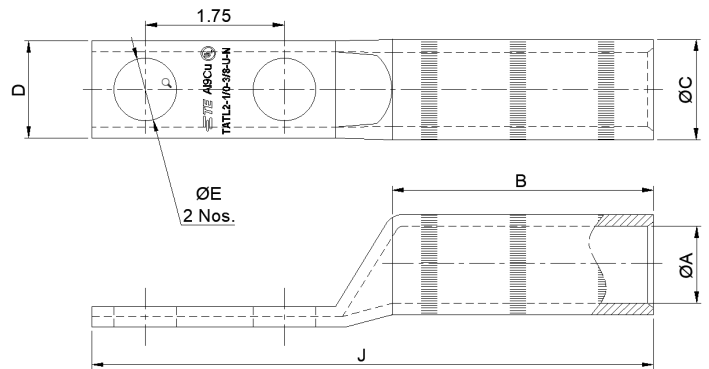
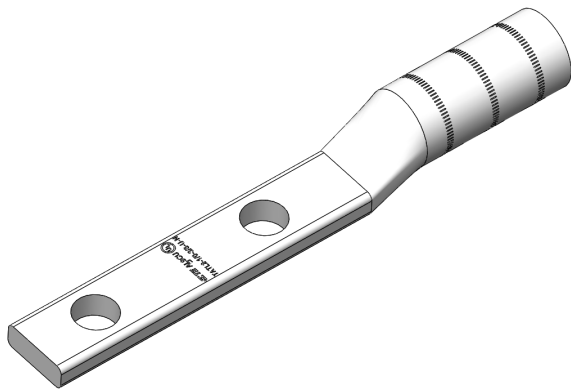
FILE NO. : E13288



FILE NO. : K3111-17-N/7564



Aluminum Compression Narrow Palm Lugs



Dual Rated Aluminium Crimp Lugs - Two Hole Narrow Palm

Description	Conductor AWG/MCM	Dimensions in inch (mm)					
		E	A	C	B	D	J
TATL2-2/0-3/8-U-N	2/0 AWG	3/8	0.44 (11.2)	0.69 (17.53)	1.5 (38.1)	0.69(18.0)	5.5 (139.7)
TATL2-3/0-3/8-U-N	3/0 AWG	3/8	0.48 (12.3)	0.76 (19.31)	1.5 (38.1)	0.76 (19.0)	5.5 (139.7)
TATL2-3/0-1/2-U-N	3/0 AWG	1/2	0.48 (12.3)	0.76 (19.31)	1.5 (38.1)	0.76 (19.0)	5.5 (139.7)
TATL2-4/0-3/8-U-N	4/0 AWG	3/8	0.54 (13.72)	0.87 (22.1)	1.94 (49.28)	1.0 (25.4)	6.0 (152.4)
TATL2-4/0-1/2-U-N	4/0 AWG	1/2	0.54 (13.72)	0.87 (22.1)	1.94 (49.28)	1.0 (25.4)	6.0 (152.4)
TATL2-250-3/8-U-N	250 MCM	3/8	0.59 (15.1)	0.91 (23.0)	1.94 (49.28)	1.0 (25.4)	6.0 (152.4)
TATL2-250-1/2-U-N	250 MCM	1/2	0.59 (15.1)	0.91 (23.0)	1.94 (49.28)	1.0 (25.4)	6.0 (152.4)
TATL2-300-3/8-U-N	300 MCM	3/8	0.65 (16.5)	1.01 (25.66)	2.25 (57.15)	1.0 (25.4)	6.56 (166.63)
TATL2-300-1/2-U-N	300 MCM	1/2	0.65 (16.5)	1.01 (25.66)	2.25 (57.15)	1.0 (25.4)	6.56 (166.63)
TATL2-350-3/8-U-N	350 MCM	3/8	0.72 (18.3)	1.11 (28.1)	2.25 (57.15)	1.07 (27.3)	6.56 (166.63)
TATL2-350-1/2-U-N	350 MCM	1/2	0.72 (18.3)	1.11 (28.1)	2.25 (57.15)	1.07 (27.3)	6.56 (166.63)
TATL2 400-1/2-U-N	400 MCM	1/2	0.76 (19.4)	1.18 (30.0)	2.50 (63.5)	1.16 (29.4)	6.88 (174.8)
TATL2-500-1/2-U-N	500 MCM	1/2	0.84 (21.4)	1.32 (33.53)	3.0 (76.2)	1.31 (33.0)	7.31 (185.68)
TATL2-600-1/2-U-N	600 MCM	1/2	0.92 (23.4)	1.44 (36.58)	3.0 (76.2)	1.31 (33.0)	7.8 (196.9)
TATL2-750-1/2-U-N	750 MCM	1/2	1.03 (26.2)	1.5 (38.1)	3.38 (85.86)	1.43 (36.3)	8.25 (209.55)
TATL2-1000-1/2-U-N	1000 MCM	1/2	1.19 (30.3)	1.84 (46.8)	4.62 (117.4)	1.65 (42.0)	9.68 (245.8)
TATL2-1000-9/16-U-N	1000 MCM	9/16	1.19 (30.3)	1.84 (46.8)	4.62 (117.4)	1.65 (42.0)	9.68 (245.8)
TATL2-1000-5/8-U-N	1000 MCM	5/8	1.19 (30.3)	1.84 (46.8)	4.62 (117.4)	1.65 (42.0)	9.68 (245.8)
TATL2-1000-3/4-U-N	1000 MCM	3/4	1.19 (30.3)	1.84 (46.8)	4.62 (117.4)	1.65 (42.0)	9.68 (245.8)

Aluminum Compression Narrow Palm Lugs

Dual Rated Aluminium Crimp Lugs - Two Hole Narrow Palm

Description	Conductor AWG/MCM	Dimensions in inch (mm)					
		E	A	C	B	D	J
TATL2-1250-1/2-N	1250 MCM	1/2	1.33 (33.7)	1.84 (46.8)	4.62 (117.3)	1.81 (46.0)	9.68 (245.8)
TATL2-1250-9/16-N	1250 MCM	9/16	1.33 (33.7)	1.84 (46.8)	4.62 (117.3)	1.81 (46.0)	9.68 (245.8)
TATL2-1250-5/8-N	1250 MCM	5/8	1.33 (33.7)	1.84 (46.8)	4.62 (117.3)	1.81 (46.0)	9.68 (245.8)
TATL2-1250-3/4-N	1250 MCM	3/4	1.33 (33.7)	1.84 (46.8)	4.62 (117.3)	1.81 (46.0)	9.68 (245.8)
TATL2-1500-1/2-N	1500 MCM	1/2	1.5 (38.0)	2.24 (57.0)	4.62 (117.3)	2.28 (58.0)	9.91 (251.7)
TATL2-1500-9/16-N	1500 MCM	9/16	1.5 (38.0)	2.24 (57.0)	4.62 (117.3)	2.28 (58.0)	9.91 (251.7)
TATL2-1500-5/8-N	1500 MCM	5/8	1.5 (38.0)	2.24 (57.0)	4.62 (117.3)	2.28 (58.0)	9.91 (251.7)
TATL2-1500-3/4-N	1500 MCM	3/4	1.5 (38.0)	2.24 (57.0)	4.62 (117.3)	2.28 (58.0)	9.91 (251.7)

TATL2 2/0 TO TATL2 750



FILE NO. : E13288

TATL2 2/0 TO TATL2 1000



FILE NO. : E13288

TATL2 1000 TO TATL2 1500



TATL2 2/0 TO TATL2 750



FILE NO. : K3111-17-N/7564

TATL2 2/0 TO TATL2 750



te.com/energy

©2020 TE Connectivity. All Rights Reserved. EPP-3213-DDS-01/20

TE Connectivity and TE connectivity (logo) are trademarks. Other logos, product and/or company names might be trademarks of their respective owners. While TE has made every reasonable effort to ensure the accuracy of the information in this brochure, TE does not guarantee that it is error-free, nor does TE make any other representation, warranty or guarantee that the information is accurate, correct, reliable or current. TE reserves the right to make any adjustments to the information contained herein at any time without notice. TE expressly disclaims all implied warranties regarding the information contained herein, including, but not limited to, any implied warranties of merchantability or fitness for a particular purpose. The dimensions in this catalog are for reference purposes only and are subject to change without notice. Specifications are subject to change without notice. Consult TE for the latest dimensions and design specifications.

FOR MORE INFORMATION:

TE Technical Support Centers

USA:	+ 1 800 327 6996
France:	+ 33 380 583 200
UK:	+ 44 0870 870 7500
Germany:	+ 49 896 089 903
Spain:	+ 34 916 630 400
Italy:	+ 39 333 250 0915
Benelux:	+ 32 16 508 695
Canada:	+ 1 (905) 475-6222
Mexico:	+ 52 (0) 55-1106-0800
Latin/S. America:	+ 54 (0) 11-4733-2200
Russia:	+ 7 495-790 790 2-200
China:	+ 86 (0) 400-820-6015