

CES and CESD Factory Sealed Receptacles

30 and 60 Amp Pin and Sleeve. Explosionproof.

Delayed-Action Safety Construction with Slide-Lok® Design. Pressure Wire Terminals.

NEC/CEC — 30 and 60 Amp CES:
Class I, Division 1 and 2, Groups C, D

NEC/CEC — 30 Amp CESD:
Class I, Division 1 and 2, Groups C, D

NEC/CEC — 60 Amp CESD:
Class I, Division 1 and 2, Groups D

Applications

- Locations where receptacles are used with stationary or portable electrically operated devices such as:
 - Lighting systems
 - Conveyors
 - Heaters
 - Motor-generator sets
 - Air conditioners
 - Compressors
 - Pumps
- Class I: classified locations such as:
 - Petrochemical plants
 - Petroleum refineries
 - Paint and chemical plants
 - Any location where ignitable vapors or gases are present

Features

- Factory sealed. No external seals required. Arcing is safely confined to receptacle interior.
- Energized receptacle contacts deeply recessed to reduce danger of accidental touching.
- Style 2 (shell and extra pole) grounding.
- Spring door keeps dust out of receptacle when plug is not in use.
- Unique design brass contacts exert constant pressure along entire contact surface and provide superior electrical contact.
- Contacts have beryllium copper wire springs.
- Plug mechanical cable clamps prevent strain on cables; they meet or exceed UL strain relief pull-out requirements.
- Neoprene bushing compressed by cable collar prevents entrance of water.
- Insulators provide superior dielectric and mechanical strength and lowest arc tracking.
- Smooth, rounded integral bushing in each hub protects conductor insulation.
- Delayed action construction. To operate, insert plug to first stop, move Slide-Lok® slide to right and push plug fully forward.
- CPH plug fits Powertite™ Series hazardous location receptacles.

Standard Materials

- Receptacle and cover: copperfree (4/10 of 1% max.) aluminum
- Mounting box: malleable iron
- Insulating blocks: fiber glass reinforced polyester

Standard Finishes

- Malleable iron mounting bodies: triple-coat (1) zinc electroplate, (2) chromate and (3) epoxy powder coat
- Aluminum receptacles: ceramic burnished
- Cord connector housings and caps: epoxy powder coat

NEC/CEC Certifications and Compliances

- UL Standard: UL 1010 (UL 1203), UL 894, UL 1682
- UL Listed: E10784
- CSA Standard: C22. No 30, C22.2 No. 159, C22.2 No 182.1
- CSA Certified: 038644



Bogotá Sala de Ventas

Carrera 12 No 13 - 46
PBX: 6013360755 - 6013412439
Celular: 312 3055335

Centro de Distribución

Carrera 18 No 19A - 36
PBX: 6013360755 EXT: 2101



CES and CESD Factory Sealed Receptacles

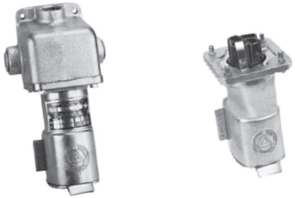
30 and 60 Amp Pin and Sleeve. Explosionproof

Delayed-Action Safety Construction with Slide-Lok® Design. Pressure Wire Terminals.

NEC/CEC — 30 and 60 Amp CES:
Class I, Division 1 and 2, Groups C, D


NEC/CEC — 30 Amp CESD:
Class I, Division 1 and 2, Groups C, D

NEC/CEC — 60 Amp CESD:
Class I, Division 1 and 2, Groups D


		Catalog Number						
	Amp	Wire/Pole	Hub Size (Inches)	Complete With Box ①	Back Box Only	Receptacle Only ②	Replacement Interior	
CES Receptacles — 30 Amp and 60 Amp, 125-250 Vac (See HP ratings below.)								
Furnished with one vertical and two horizontal feed-thru hubs.								
 CES CESR	30	2W, 3P	3/4	CES-3023	CES-30B	CESR-3023	CERI-3023	
		3W, 4P	3/4	CES-3034	CES-30B	CESR-3034	CERI-3034	
	60	2W, 3P	1-1/4	CES-6023	CES-60B	CESR-6023	CERI-6023	
		3W, 4P	1-1/4	CES-6034	CES-60B	CESR-6034	CERI-6034	

CESD Receptacles — 30 Amp and 60 Amp, 125-250 Vac

(See HP ratings below.)
Furnished with vertical feed-thru hubs.

 CESD CESR	30	2W, 3P	3/4	CESD-3023	CESD-30B	CESR-3023	CERI-3023
		3W, 4P	3/4	CESD-3034	CESD-30B	CESR-3034	CERI-3034
	60	2W, 3P	1-1/4	CESD-6023	CESD-60B	CESR-6023	CERI-6023
		3W, 4P	1-1/4	CESD-6034	CESD-60B	CESR-6034	CERI-6034

CPH Plugs and Plug Interiors for Use with Receptacles Above

		Amp	Wire/Pole	Cable Dia. (Inches)	Complete Plug	Replacement Interior
 CPH Plug (30 and 60 Amp) Pressure Terminals Interior	30	2W, 3P	.500 to 1.125	CPH3023BC	CEPI-3023B	
		3W, 4P	.500 to 1.125	CPH3034BC	CEPI-3034B	
	60 ⑤	2W, 3P	.500 to 1.375	CPH6023BC	CEPI-6023BC	
		3W, 4P	.500 to 1.375	CPH6034BC	CEPI-6034BC	

CES/CESD Horsepower Ratings for Emergency Disconnect Under Load

125–250 Vac					480③–600④ Vac				
Wire/Pole	Phase	Max. HP	Max. Amp	Catalog Number	Wire/Pole	Phase	Max. HP	Max. Amp	Catalog Number
2W, 3P	1	1-1/2	30	CES/CESD-3023	2W, 3P	1	1/2	7	CES/CESD-3023
3W, 4P	3	3	30	CES/CESD-3034	3W, 4P	3	1	7	CES/CESD-3034
2W, 3P	1	1-1/2	60	CES/CESD-6023	2W, 3P	1	1-1/2	30	CES/CESD-6023
3W, 4P	3	5	60	CES/CESD-6034	3W, 4P	3	5	30	CES/CESD-6034

① UL Listed with Mounting Box.

② NOT UL Listed. Only UL Listed when Receptacle is provided with Mounting Box.

③ 480 Vac is certified by UL for NEC.

④ 600 Vac is certified by CSA for CEC.

⑤ 60 Amp CPH plugs with -BC suffix are NOT UL listed.

CES and CESD Factory Sealed Receptacles

30 and 60 Amp Pin and Sleeve. Explosionproof

Delayed-Action Safety Construction with Slide-Lok® Design. Pressure Wire Terminals.

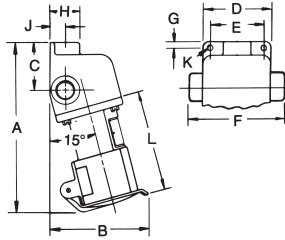
NEC/CEC — 30 and 60 Amp CES:
Class I, Division 1 and 2, Groups C, D

NEC/CEC — 30 Amp CESD:
Class I, Division 1 and 2, Groups C, D

NEC/CEC — 60 Amp CESD:
Class I, Division 1 and 2, Groups D

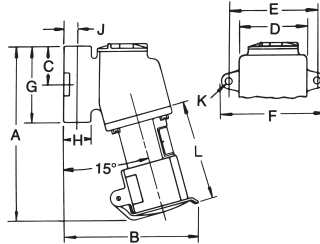
Dimensions in Millimeters (Inches)

CES Receptacles



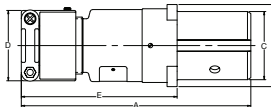
Hub Size (Inches)	Max. Amp	Dimensions in Millimeters (Inches)										
		A	B	C	D	E	F	G	H	J	K	L
3/4	30	211.0 (8.31)	125.4 (4.94)	60.4 (2.38)	85.8 (3.38)	66.8 (2.63)	119.1 (4.69)	7.8 (0.31)	38.1 (1.50)	19.8 (0.78)	4/1 ϕ	128.7 (5.07)
1-1/4	60	301.7 (11.88)	174.7 (6.88)	73.1 (2.88)	133.3 (5.25)	111.2 (4.38)	185.6 (7.31)	11.1 (0.44)	65.0 (2.56)	35.0 (1.38)	32/13 ϕ	180.3 (7.10)

CESD Receptacles



Hub Size (Inches)	Max. Amp	Dimensions in Millimeters (Inches)										
		A	B	C	D	E	F	G	H	J	K	L
3/4	30	220.7 (8.69)	171.4 (6.75)	47.7 (1.88)	85.8 (3.38)	111.2 (4.38)	130.3 (5.13)	95.2 (3.75)	35.0 (1.38)	17.5 (0.69)	32/11 ϕ	128.7 (5.07)
1-1/4	60	323.8 (12.75)	236.4 (9.31)	81.0 (3.19)	133.3 (5.25)	158.7 (6.25)	184.1 (7.25)	160.2 (6.31)	65.0 (2.56)	35.0 (1.38)	32/11 ϕ	180.3 (7.10)

CPH Plugs



Max. Amp	Wire/Pole	Dimensions in Millimeters (Inches)				
		A	B	C	D	E
30	2W, 3P; 3W, 4P	155.7 (6.13)	60.4 (2.38)	47.2 (1.86)	6.68 (2.63)	113.7 (4.44)
60	2W, 3P	123.9 (8.44)	77.7 (3.06)	56.6 (2.23)	6.68 (2.63)	144.5 (5.69)
60	3W, 4P	123.9 (8.44)	77.7 (3.06)	64.7 (2.55)	6.68 (2.63)	144.5 (5.69)