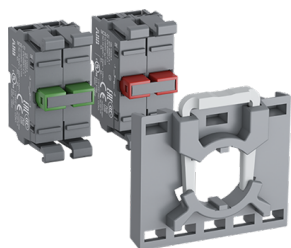


PRODUCT-DETAILS

MCBH-111

MCBH-111 Contact Block



genel Bilgi

Extended Product Type	MCBH-111
Product ID	1SFA611605R1211
EAN	7320500307601
Catalog Description	MCBH-111 Contact Block
Long Description	Modular contact block with holder

Ordering

E-Number (Norway)	4372842
E-Number (Sweden)	3714042
EAN	7320500307601
Minimum Order Quantity	10 piece
Customs Tariff Number	8536901000

Dimensions

Product Net Width	0.03 m
Product Net Height	0.048 m
Product Net Depth / Length	0.036 m

Product Net Weight 0.059 kg

Container Information

Package Level 1 Units	1 piece
Package Level 1 Width	0.11 m
Package Level 1 Height	0.03 m
Package Level 1 Depth / Length	0.15 m
Package Level 1 Gross Weight	0.059 kg
Package Level 1 EAN	7320500307601

Environmental

RoHS Status Following EU Directive 2002/95/EC August 18, 2005 and amendment

Additional Information

Accessory Type	Contact blocks and holders
Block	Single contact block and MLB-1 lampblock
Connection Type	Screw Clamp
Degree of Protection	Terminals IP20
Device	Holder for blocks incl.
Function	With 3-position holder
Illumination	Non-illuminated
Lamp Type	Socket for max 230V AC / DC filament bulb or LED
Mechanical Durability	10 million
Mounting Type	Front mounting
Number of Auxiliary Contacts NC	1
Number of Auxiliary Contacts NO	1
Product Main Type	MCBH
Product Name	Contact Block
Product Range	Modular range
Product Type	MCBH
Rated Frequency (f)	Supply Circuit 50 60 Hz
Rated Operational Current AC-15 (I _θ)	(220 / 240 V) 6 A (24 / 127 V) 8 A
Rated Operational Current DC-13 (I _θ)	(125 V) 1.1 A (24 V) 5
RoHS Date	0635 4
Suitable For	MP1 MP2 MP3 MP4 MPD1 MPD2 MPD3 MPD4

MPD5
 MPD11
 MPD12
 MPD13
 MPD14
 MPD15
 MPD16
 MPM1
 MPM2
 KP6
 MPET3
 MPEP3
 MPEK3
 MPET4
 MPEP4
 MPEK4
 MPMT3
 MPMT4
 MPMP3
 MPMP4
 M2SS1
 M2SS2
 M2SS3
 M2SS4
 M2SS5
 M2SS6
 M3SS1
 M3SS2
 M3SS3
 M3SS4
 M3SS5
 M3SS6
 M3SS7
 M3SS8
 M3SSC1
 M3SSC2
 M3SSC3
 M3SSC4
 M3SSC5
 M3SSC6
 M3SSC7
 M3SSC8
 M2SSK1
 M2SSK2
 M2SSK3
 M3SSK1
 M3SSK2
 M3SSK3
 MTS1
 MTS2
 MTS3
 MJS1
 MJS2
 MJS5
 MJS6
 MJS7
 MJS8
 MJS11
 MJS12

Certificates and Declarations (Document Number)

CQC Certificate	CQC2005010304154103
Data Sheet, Technical Information	1SFC151007C02__
Declaration of Conformity - CCC	2020980305001528
Declaration of Conformity	1SFA1-83

- CE

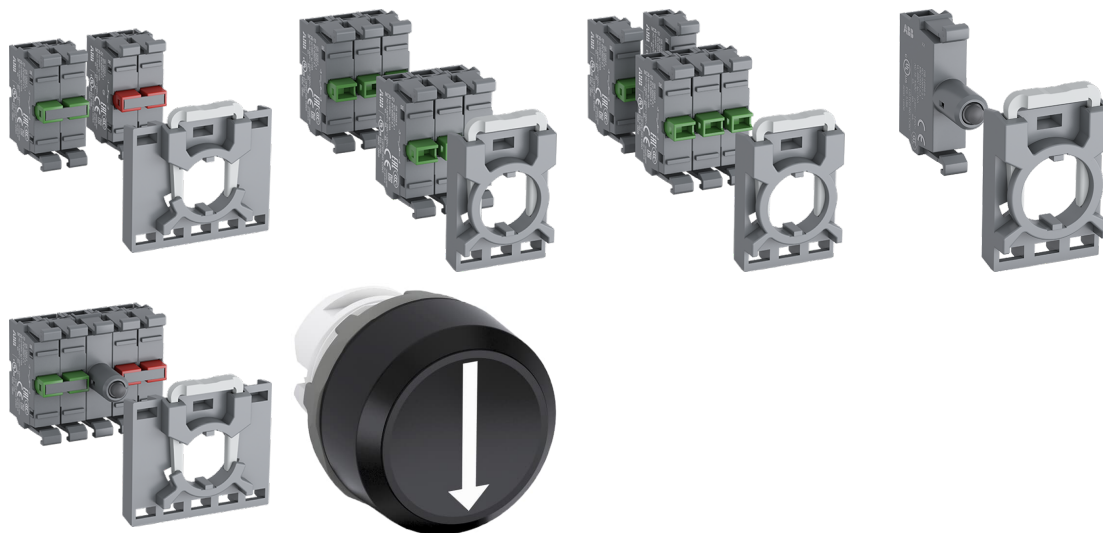
Environmental Information	1SFC151010D0201
Instructions and Manuals	1SFC151011M0201
RoHS Information	1SFC151011D0203

Classifications

ETIM 4	EC002024 - Accessories for control circuit devices
ETIM 5	EC000041 - Auxiliary contact block
ETIM 6	EC000041 - Auxiliary contact block
ETIM 7	EC000041 - Auxiliary contact block
Object Classification Code	S
UNSPSC	39121500
WEEE Category	5. Small Equipment (No External Dimension More Than 50 cm)

katagori

Low Voltage Products and Systems → Control Products → Pilot Devices → Modular Plastic Range



Bogotá Sala de Ventas

Carrera 12 No 13 - 46
 PBX: 6013360755 - 6013412439
 Celular: 312 3055335

Centro de Distribución

Carrera 18 No 19A - 36
 PBX: 6013360755 EXT: 2101

