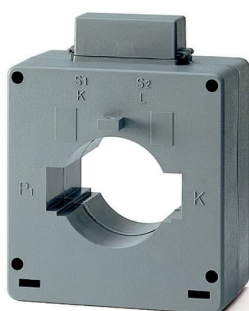


PRODUCT-DETAILS

CT6/2500

CT6/2500 Current transformer



General Information

Extended Product Type	CT6/2500
Product ID	2CSG421240R1101
EAN	8012542606505
Catalog Description	CT6/2500 Current transformer
Long Description	CT6/2500 is used to transform primary currents to $.5A$ secondary currents for c.a. measurement instruments

Technical

Cable Use	Cable and Horizontal bar
Rated Primary Current (I_{pn})	2500 A
Rated Secondary Current (I_{sn})	5 A
Current Limit Function	FS 5
Frequency (f)	50 ... 60 Hz
Apparent Power Output	10 V·A
Power Loss	16 W
Secondary Output Connection	Plug-in connection
Accuracy	$\pm 0,5\%$
Mounting Type	Through Primary
Model Number	Through-feed converter
Cable Cross-Section	50 mm
Rated Cross-Section	60 x 20 mm

Environmental

Ambient Air Temperature	Operation -5 ... 50 °C
Degree of Protection	IP30
RoHS Status	Following EU Directive 2002/95/EC August 18, 2005 and amendment
RoHS Information	2CSC445004K0201
Environmental Information	See RoHS Information
Conflict Minerals Reporting Template (CMRT)	9AKK108468A3363

Dimensions

Product Net Width	105 mm
Product Net Height	26.5 mm
Product Net Depth / Length	61 mm
Product Net Weight	0.0812 kg

Ordering

Package Level 1 Units	box 1 piece
Package Level 1 Gross Weight	0.1272 kg

Certificates and Declarations

Declaration of Conformity - CE	9AKK106713A5700
--------------------------------	-----------------

Installation

Instructions and Manuals	No document needed
--------------------------	--------------------

Popular Downloads

Data Sheet, Technical Information	9AKK107046A0430
-----------------------------------	-----------------

Classifications

ETIM 8	EC002048 - Current transformer
ETIM 9	EC002048 - Current transformer
WEEE Category	5. Small Equipment (No External Dimension More Than 50 cm)
WEEE B2C / B2B	Business To Consumer
CN8	85043121
eClass	V11.0 : 27210902
Object Classification Code	T

Categories

Low Voltage Products and Systems → Modular DIN Rail Products → Energy Efficiency Devices → Current Transformers

