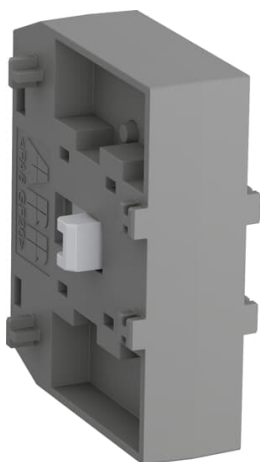

PRODUCT-DETAILS

VM19

VM19 Mechanical Interlock Unit



General Information

Extended Product Type	VM19
Product ID	1SFN030300R1000
EAN	7320500492574
Catalog Description	VM19 Mechanical Interlock Unit
Long Description	Mechanical interlock for use with contactors AF116...AF370. For interlocking two contactors of equal frame size

Ordering

E-Number (Finland)	3707469
E-Number (Norway)	4117833
E-Number (Sweden)	3210176
EAN	7320500492574
Minimum Order Quantity	1 piece
Customs Tariff Number	85389099

Dimensions

Product Net Width	70 mm
Product Net Height	58.7 mm

Product Net Depth / Length	31.9 mm
Product Net Weight	0.05 kg

Container Information

Package Level 1 Units	bag 1 piece
Package Level 1 Width	70 mm
Package Level 1 Height	31.9 mm
Package Level 1 Depth / Length	58.7 mm
Package Level 1 Gross Weight	0.07 kg
Package Level 1 EAN	7320500492574

Environmental

RoHS Status	Following EU Directive 2011/65/EU
-------------	-----------------------------------

Additional Information

Order Multiple	1 piece
Product Main Type	VM19
Product Name	Mechanical Interlock Unit
RoHS Date	1713
Suitable For	AF116...AF146 AF190...AF205 AF265...AF370
Suitable for Product Class	CONTACTORS
Terminal Type	Screw Terminals

Certificates and Declarations (Document Number)

cULus Certificate	20180302-E36588
Data Sheet, Technical Information	1SBC100173C0201
Declaration of Conformity - CE	2CMT004895
Environmental Information	2CMT004732
Instructions and Manuals	N/A
RoHS Information	2CMT004895

Classifications

ETIM 4	EC001044 - Mechanic interlock for switch
ETIM 5	EC001044 - Mechanic interlock for switch
ETIM 6	EC001044 - Mechanic interlock for switch
ETIM 7	EC001044 - Mechanic interlock for switch
Object Classification Code	R

UNSPSC

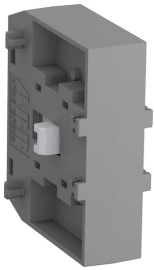
39121529

WEEE Category

Product Not in WEEE Scope

Categories

Low Voltage Products and Systems → Control Products → Contactors → Block Contactors Accessories



Bogotá Sala de Ventas

Carrera 12 No 13 - 46
PBX: 6013360755 - 6013412439
Celular: 312 3055335

Centro de Distribución

Carrera 18 No 19A - 36
PBX: 6013360755 EXT: 2101

