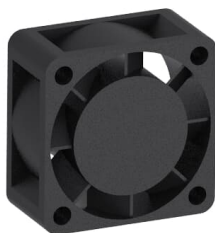

PRODUCT-DETAILS

PSFA-40

PSFA-40 FAN



General Information

Extended Product Type	PSFA-40
Product ID	1SFA899215R1040
ABB Type Designation	FAN#PSFA-40
EAN	7320500409916
Catalog Description	PSFA-40 FAN
Long Description	The PSFA-40 Fan is suitable for PSTX30...PSTX105 Softstarters.

Ordering

Minimum Order Quantity	1 piece
Customs Tariff Number	85369001
Product Main Type	PSFA

Popular Downloads

Data Sheet, Technical Information	1SFC132013C0201
Instructions and Manuals	1SFC132065M0201
CAD Dimensional Drawing	2CDC001079B0201

Dimensions

Product Net Width	40 mm
Product Net Depth / Length	40 mm
Product Net Height	20 mm
Product Net Weight	0.03 kg

Technical

Suitable For	PSTX30...PSTX105
Suitable for Product Class	Softstarters
Technical Information	PSE Spare part fan

Environmental

Conflict Minerals Reporting Template (CMRT)	9AKK108467A5658
RoHS Information	2CMT2022-006500
RoHS Status	Following EU Directive 2011/65/EU
WEEE B2C / B2B	Business To Business
WEEE Category	Product Not in WEEE Scope

Container Information

Package Level 1 Units	box 1 piece
Package Level 1 Width	60 mm
Package Level 1 Depth / Length	60 mm
Package Level 1 Height	40 mm
Package Level 1 Gross Weight	0.08 kg
Package Level 1 EAN	7320500409916

Classifications

eClass	V11.0 : 27371392
ETIM 7	EC000249 - Protection switch disconnecter housing
ETIM 8	EC002498 - Accessories/spare parts for low-voltage switch technology
ETIM 9	EC002498 - Accessories/spare parts for low-voltage switch technology
Object Classification Code	Q
UNSPSC	40101600

Categories

Drives → Softstarters → Softstarters Accessories → Accessories for Softstarters
 Low Voltage Products and Systems → Control Products → Softstarters → Softstarters Accessories → Accessories for Softstarters

