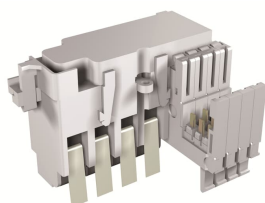


PRODUCT-DETAILS

# AUX 2Q 400V + 2Q 24V E2.2...E6.2

## AUX 2Q 400V + 2Q 24V E2.2...E6.2



### General Information

Extended Product Type	AUX 2Q 400V + 2Q 24V E2.2...E6.2
Product ID	1SDA073755R1
EAN	8015644776886
Catalog Description	AUX 2Q 400V + 2Q 24V E2.2...E6.2
Long Description	2 CHANGEOVER CONTACT OPEN-CLOSED V <(><<<>> 400V AC + 2 CHANGEOVER CONTACT OPEN-CLOSED V <(><<<>> 24V DC E2.2...E6.2

### Circular Value

Conflict Minerals Reporting Template (CMRT)	9AKK108467A5658
Toxic Substances Control Act - TSCA	9AKK108467A8326

### Environmental

Environmental Information	9AKK108467A6707
REACH Declaration	9AKK108466A1425
RoHS Information	9AKK108466A1424

RoHS Status

Following EU Directive 2011/65/EU and Amendment 2015/863 July 22, 2019

---

## Ordering

Order Code US and Canada	ZEBAUX2-2D
EAN	8015644776886
Minimum Order Quantity	1 piece
Customs Tariff Number	85389099

---

## Dimensions

Product Net Weight	0.223 kg
--------------------	----------

---

## Container Information

Package Level 1 Units	box 1 piece
Package Level 1 Width	220 mm
Package Level 1 Height	40 mm
Package Level 1 Depth / Length	500 mm
Package Level 1 Gross Weight	0.223 kg
Package Level 1 EAN	8015644776886

---

## Additional Information

Configuration Type	Loose or configurable
Number of Auxiliary Contacts CO (SPDT)	2
Product Main Type	Accessories for Emax 2
Product Name	Accessory
Product Type	Accessory
Standards	IEC
Suitable For	E2.2, E4.2, E6.2
Suitable for Product Class	SACE Emax 2

---

## Certificates and Declarations

ATEX Certificate	No certification needed
Data Sheet, Technical Information	1SDC200023D0204
Declaration of Conformity - CE	Refer to the EU Declaration of the relative Circuit Breaker
UL Certificate	No certification needed
VDE Certificate	No certification needed
Instructions and Manuals	1SDH001000R0613

---

## Classifications

ETIM 7	EC000041 - Auxiliary contact block
ETIM 8	EC000041 - Auxiliary contact block
ETIM 9	EC000041 - Auxiliary contact block
IDEA Granular Category Code (IGCC)	4743 >> Auxiliary contact block
Object Classification Code	Q
UNSPSC	39121522
WEEE Category	5. Small Equipment (No External Dimension More Than 50 cm)
eClass	V11.1 : 27371302

---

## Categories

---

Low Voltage Products and Systems → Circuit Breakers → Air Circuit Breakers → Accessories for Emax 2

